

For Research Use Only

CoraLite® Plus 488-conjugated IDE Monoclonal antibody



Catalog Number:CL488-67106

Basic Information

Catalog Number: CL488-67106	GenBank Accession Number: BC096336	Purification Method: Protein A purification
Size: 100ul , Concentration: 1000 µg/ml by Nanodrop;	GeneID (NCBI): 3416	CloneNo.: 3E10G1
Source: Mouse	Full Name: Abeta degrading protease	Recommended Dilutions: IF 1:50-1:500
Isotype: IgG2b	Calculated MW: 1019 aa, 118 kDa	Excitation/Emission maxima wavelengths: 493 nm / 522 nm
Immunogen Catalog Number: AG17161	Observed MW: 100-120 kDa	

Applications

Tested Applications: IF	Positive Controls: IF : A549 cells,
Species Specificity: Human, Mouse, Rat	

Background Information

IDE(INS-degrading enzyme) belongs to the peptidase M16 family. It is also known as insulysin and is a 110-kD neutral metallopeptidase that can degrade a number of peptides, including INS and beta-amyloid(PMID:9830016). The reduction of IDE expression may be a risk factor for AD, and that IDE may interact with APOE status to affect beta-amyloid metabolism(PMID:12507914). It can exist as a homodimer and form higher oligomers(PMID:17613531).

Storage

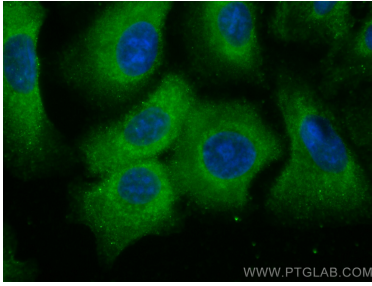
Storage:
Store at -20°C. Avoid exposure to light. Stable for one year after shipment.
Storage Buffer:
PBS with 50% Glycerol, 0.05% Proclin300, 0.5% BSA, pH 7.3.
Aliquoting is unnecessary for -20°C storage

*** 20ul sizes contain 0.1% BSA

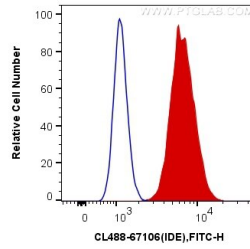
For technical support and original validation data for this product please contact:
T: 1 (888) 4PTGLAB (1-888-478-4522) (toll free in USA), or 1(312) 455-8498 (outside USA)
E: proteintech@ptglab.com
W: ptglab.com

This product is exclusively available under Proteintech Group brand and is not available to purchase from any other manufacturer.

Selected Validation Data



Immunofluorescent analysis of (-20°C Methanol) fixed A549 cells using Coralite® Plus 488 IDE antibody (CL488-67106, Clone: 3E10G1) at dilution of 1:200.



1X10⁶ A549 cells were intracellularly stained with 0.4 ug Coralite® Plus 488 Anti-Human IDE (CL488-67106, Clone:3E10G1) (red), or 0.4 ug Mouse IgG2b Isotype Control (CL488-66360-3, Clone: K11B8C4B5) (blue). Cells were fixed with 4% PFA and permeabilized with Flow Cytometry Perm Buffer (PF00011-C).