

For Research Use Only

CoraLite® Plus 488-conjugated CNTROB Monoclonal antibody



Catalog Number:CL488-67061

Basic Information

Catalog Number: CL488-67061	GenBank Accession Number: BC021134	Purification Method: Protein G purification
Size: 100ul , Concentration: 1000 µg/ml by Nanodrop;	GeneID (NCBI): 116840	CloneNo.: 3D12A4
Source: Mouse	Full Name: centrobin, centrosomal BRCA2 interacting protein	Recommended Dilutions: IF 1:50-1:500
Isotype: IgG1	Calculated MW: 903 aa, 101 kDa	
Immunogen Catalog Number: AG25447	Observed MW: 97 kDa	

Applications

Tested Applications: IF	Positive Controls: IF : hTERT-RPE1 cells,
Species Specificity: Human, Mouse, Rat, Pig	

Background Information

Storage

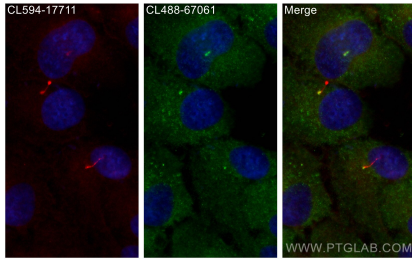
Storage:
Store at -20°C. Avoid exposure to light. Stable for one year after shipment.
Storage Buffer:
PBS with 50% Glycerol, 0.05% Proclin300, 0.5% BSA, pH 7.3.
Aliquoting is unnecessary for -20°C storage

*** 20ul sizes contain 0.1% BSA

For technical support and original validation data for this product please contact:
T: 1 (888) 4PTGLAB (1-888-478-4522) (toll free in USA), or 1(312) 455-8498 (outside USA) E: proteintech@ptglab.com W: ptglab.com

This product is exclusively available under Proteintech Group brand and is not available to purchase from any other manufacturer.

Selected Validation Data



Immunofluorescent analysis of (-20°C Methanol) fixed hTERT-RPE1 cells using CoraLite® Plus 488 CNTROB antibody (CL488-67061, Clone: 3D12A4) at dilution of 1:200, CoraLite®594 ARL13B antibody (CL594-17711, red).