

For Research Use Only

CoraLite® Plus 488-conjugated MED30 Monoclonal antibody



Catalog Number:CL488-67038

Basic Information

Catalog Number: CL488-67038	GenBank Accession Number: BC008226	Purification Method: Protein A purification
Size: 100ul , Concentration: 1000 µg/ml by Nanodrop;	GeneID (NCBI): 90390	CloneNo.: 1D7C4
Source: Mouse	Full Name: mediator complex subunit 30	Excitation/Emission maxima wavelengths: 493 nm / 522 nm
Isotype: IgG2a	Calculated MW: 178 aa, 20 kDa	
Immunogen Catalog Number: AG10235	Observed MW: 20-25 kDa	

Applications

Tested Applications:
FC (Intra)

Species Specificity:
Human, rat, pig

Background Information

MED30, also named as THRAP6 and TRAP25, is a component of the Mediator complex. MED30 has two isoforms with MW 16-20 kDa and 20-25 kDa.

Storage

Storage:
Store at -20°C. Avoid exposure to light. Stable for one year after shipment.

Storage Buffer:
PBS with 50% Glycerol, 0.05% Proclin300, 0.5% BSA, pH 7.3.

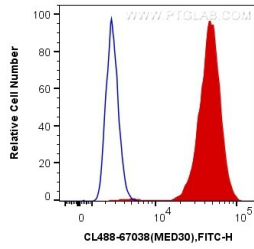
Aliquoting is unnecessary for -20°C storage

*** 20ul sizes contain 0.1% BSA

For technical support and original validation data for this product please contact:
T: 1 (888) 4PTGLAB (1-888-478-4522) (toll free in USA), or 1(312) 455-8498 (outside USA) E: proteintech@ptglab.com W: ptglab.com

This product is exclusively available under Proteintech Group brand and is not available to purchase from any other manufacturer.

Selected Validation Data



1X10⁶ HeLa cells were intracellularly stained with 0.4 ug Coralite® Plus 488 Anti-Human MED30 (CL488-67038, Clone:1D7C4) (red), or 0.4 ug Mouse IgG2a Isotype Control (CL488-66360-2, Clone: K11A1B2A2) (blue). Cells were fixed and permeabilized with Transcription Factor Staining Buffer Kit (PF00011).