

For Research Use Only

CoraLite® Plus 488-conjugated CEP63 Monoclonal antibody



Catalog Number: CL488-66996

Basic Information

| | | |
|---|--|---|
| Catalog Number: CL488-66996 | GenBank Accession Number: BC014050 | Purification Method: Protein G purification |
| Size: 100ul , Concentration: 1000 µg/ml by Nanodrop; | GeneID (NCBI): 80254 | CloneNo.: 2G12B2 |
| Source: Mouse | Full Name: centrosomal protein 63kDa | Recommended Dilutions: IF 1:50-1:500 |
| Isotype: IgG1 | Calculated MW: 703 aa, 81 kDa | |
| Immunogen Catalog Number: AG9227 | Observed MW: 85 kDa | |

Applications

| | |
|--|---|
| Tested Applications: IF | Positive Controls: IF : hTERT-RPE1 cells, |
| Species Specificity: Human, Mouse, Rat | |

Background Information

CEP63 is required for normal spindle assembly. It maintains centrosome numbers through centrosomal recruitment of CEP152. CEP63 recruits CDK1 to centrosomes. It plays a role in DNA damage response.

Storage

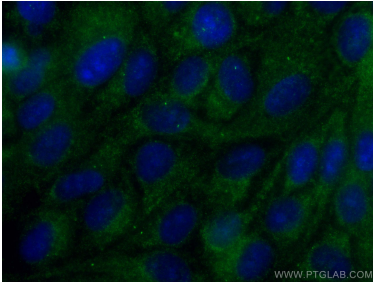
Storage:
Store at -20°C. Avoid exposure to light. Stable for one year after shipment.
Storage Buffer:
PBS with 50% Glycerol, 0.05% Proclin300, 0.5% BSA, pH 7.3.
Aliquoting is unnecessary for -20°C storage

***** 20ul sizes contain 0.1%BSA**

For technical support and original validation data for this product please contact:
T: 1 (888) 4PTGLAB (1-888-478-4522) (toll free in USA), or 1(312) 455-8498 (outside USA) E: proteintech@ptglab.com W: ptglab.com

This product is exclusively available under Proteintech Group brand and is not available to purchase from any other manufacturer.

Selected Validation Data



Immunofluorescent analysis of (-20°C Methanol) fixed hTERT-RPE1 cells using CoraLite® Plus 488 CEP63 antibody (CL488-66996, Clone: 2G12B2) at dilution of 1:200.