

For Research Use Only

CoraLite® Plus 488-conjugated CAPN2 Monoclonal antibody



Catalog Number: CL488-66977

Basic Information

Catalog Number: CL488-66977	GenBank Accession Number: BC021303	Purification Method: Protein G purification
Size: 100ul , Concentration: 1000 µg/ml by Nanodrop;	GeneID (NCBI): 824	CloneNo.: 1E1F10
Source: Mouse	Full Name: calpain 2, (m/II) large subunit	Recommended Dilutions: IF 1:50-1:500
Isotype: IgG1	Calculated MW: 700 aa, 80 kDa	Excitation/Emission maxima wavelengths: 493 nm / 522 nm
Immunogen Catalog Number: AG28427	Observed MW: 72-80 kDa	

Applications

Tested Applications: IF	Positive Controls: IF : HepG2 cells,
Species Specificity: Human, Mouse, Rat	

Background Information

Calpain 2(Calpain-2 catalytic subunit) is also named as CANPL2, CANPml, mCANP, FLJ39928 and belongs to the peptidase C2 family. N-terminal sequencing of CAPN2 purified from human liver indicates that the N-terminal methionine is removed, resulting in a mature 699-amino acid subunit with a calculated molecular mass of 79.9 kD(PMID:2852952). It is a calcium-regulated non-lysosomal thiol-protease which catalyzes limited proteolysis of substrates involved in cytoskeletal remodelling and signal transduction. It has 2 isoforms produced by alternative splicing with the molecular weight of 80 kDa and 71 kDa.

Storage

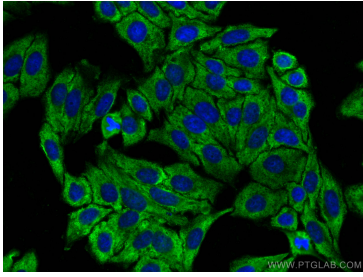
Storage:
Store at -20°C. Avoid exposure to light. Stable for one year after shipment.
Storage Buffer:
PBS with 50% Glycerol, 0.05% Proclin300, 0.5% BSA, pH 7.3.
Aliquoting is unnecessary for -20°C storage

*** 20ul sizes contain 0.1% BSA

For technical support and original validation data for this product please contact:
T: 1 (888) 4PTGLAB (1-888-478-4522) (toll free in USA), or 1(312) 455-8498 (outside USA)
E: proteintech@ptglab.com
W: ptglab.com

This product is exclusively available under Proteintech Group brand and is not available to purchase from any other manufacturer.

Selected Validation Data



Immunofluorescent analysis of (-20°C Ethanol) fixed HepG2 cells using CoraLite® Plus 488 CAPN2 antibody (CL488-66977, Clone: 1E1F10) at dilution of 1:200.