

For Research Use Only

CoraLite® Plus 488-conjugated KLF5 Monoclonal antibody



Catalog Number: CL488-66850

Featured Product

Basic Information

Catalog Number: CL488-66850	GenBank Accession Number: BC042131	Purification Method: Protein G purification
Size: 100ul , Concentration: 1000 µg/ml by Nanodrop;	GeneID (NCBI): 688	CloneNo.: 2C11C5
Source: Mouse	Full Name: Kruppel-like factor 5 (intestinal)	Excitation/Emission maxima wavelengths: 488 nm / 515 nm
Isotype: IgG1	Calculated MW: 457 aa, 51 kDa	
Immunogen Catalog Number: AG15403	Observed MW: 51-57 kDa	

Applications

Tested Applications:
FC (Intra)

Species Specificity:
Human, mouse

Background Information

KLF5, also known as BTEB2 and IKLF, is a member of the Krueppel-like transcription factor family. It is a transcription factor for SMemb/non-muscle myosin heavy chain-B (NMHC-B). It is a molecular marker of phenotypically modulated smooth-muscle cells. KLF5 seems to be a key element linking external stress and cardiovascular remodeling.

Storage

Storage:
Store at -20°C. Avoid exposure to light. Stable for one year after shipment.

Storage Buffer:
PBS with 50% Glycerol, 0.05% Proclin300, 0.5% BSA, pH 7.3.

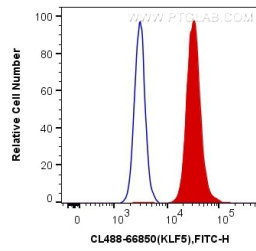
Aliquoting is unnecessary for -20°C storage

*** 20ul sizes contain 0.1% BSA

For technical support and original validation data for this product please contact:
T: 1 (888) 4PTGLAB (1-888-478-4522) (toll free in USA), or 1(312) 455-8498 (outside USA)
E: proteintech@ptglab.com
W: ptglab.com

This product is exclusively available under Proteintech Group brand and is not available to purchase from any other manufacturer.

Selected Validation Data



1X10⁶ HeLa cells were intracellularly stained with 0.4 ug CoraLite® Plus 488 Anti-Human KLF5 (CL488-66850, Clone:2C11C5) (red), or 0.4 ug Control Antibody. Cells were fixed and permeabilized with Transcription Factor Staining Buffer Kit (PF00011).