

For Research Use Only

CoraLite® Plus 488-conjugated CFP Monoclonal antibody



Catalog Number: **CL488-66788**

Basic Information

| | | |
|---|--|---|
| Catalog Number: CL488-66788 | GenBank Accession Number: BC015756 | Purification Method: Protein G purification |
| Size: 100ul , Concentration: 1000 µg/ml by Nanodrop; | GeneID (NCBI): 5199 | CloneNo.: 1D5A9 |
| Source: Mouse | Full Name: complement factor properdin | Recommended Dilutions: WB 1:500-1:1000 |
| Isotype: IgG1 | Calculated MW: 469 aa, 51 kDa | Excitation/Emission maxima wavelengths: 493 nm / 522 nm |
| Immunogen Catalog Number: AG9798 | Observed MW: 50 kDa, 100 kDa, 150 kDa | |

Applications

| | |
|--|---|
| Tested Applications: WB | Positive Controls: WB : Jurkat cells, |
| Species Specificity: Human, pig, rat | |

Background Information

CFP, also named as Properdin or CFP, is a 469 amino acid protein, which contains 7 TSP type-1 domains. CFP as secreted protein is a positive regulator of the alternate pathway of complement. It binds to and stabilizes the C3- and C5-convertase enzyme complexes. Properdin deficiency poses a significant risk for severe meningococcal infections (PMID: 22229731). Properdin may be novel biomarker for future risk of type 2 diabetes (PMID: 22338105). In plasma, properdin exists as dimers, trimers or tetramers.

Storage

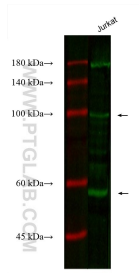
Storage:
Store at -20°C. Avoid exposure to light. Stable for one year after shipment.
Storage Buffer:
PBS with 50% Glycerol, 0.05% Proclin300, 0.5% BSA, pH 7.3.
Aliquoting is unnecessary for -20°C storage

***** 20ul sizes contain 0.1% BSA**

For technical support and original validation data for this product please contact:
T: 1 (888) 4PTGLAB (1-888-478-4522) (toll free in USA), or 1(312) 455-8498 (outside USA)
E: proteintech@ptglab.com
W: ptglab.com

This product is exclusively available under Proteintech Group brand and is not available to purchase from any other manufacturer.

Selected Validation Data



Various lysates were subjected to SDS PAGE followed by western blot with CL488-66788 (CFP antibody) at dilution of 1:800 incubated at room temperature for 1.5 hours.