

For Research Use Only

# CoraLite® Plus 488-conjugated EPHA2 Monoclonal antibody



Catalog Number: CL488-66736

Featured Product

## Basic Information

<b>Catalog Number:</b> CL488-66736	<b>GenBank Accession Number:</b> BC037166	<b>Purification Method:</b> Protein G purification
<b>Size:</b> 100ul , Concentration: 1000 µg/ml by Nanodrop;	<b>GeneID (NCBI):</b> 1969	<b>CloneNo.:</b> 1A9C3
<b>Source:</b> Mouse	<b>Full Name:</b> EPH receptor A2	<b>Excitation/Emission maxima wavelengths:</b> 493 nm / 522 nm
<b>Isotype:</b> IgG1	<b>Calculated MW:</b> 976 aa, 108 kDa	
<b>Immunogen Catalog Number:</b> AG22566	<b>Observed MW:</b> 130 kDa	

## Applications

**Tested Applications:**  
FC (Intra)

**Species Specificity:**  
Human

## Background Information

Ephrin type-A receptor 2 (EPHA2), belongs to the receptor tyrosine kinases (RTKs) family, that binds promiscuously membrane-bound ephrin-A family ligands residing on adjacent cells, leading to contact-dependent bidirectional signaling into neighboring cells. Research studies have shown that Eph receptors and ligands may be involved in many diseases including cancer (PMID: 11114742). The "reverse signaling" function, whereby the cytoplasmic domain becomes tyrosine phosphorylated, allows interactions with other proteins that may activate signaling pathways in the ligand-expressing cells.

## Storage

**Storage:**  
Store at -20°C. Avoid exposure to light. Stable for one year after shipment.

**Storage Buffer:**  
PBS with 50% Glycerol, 0.05% Proclin300, 0.5% BSA, pH 7.3.

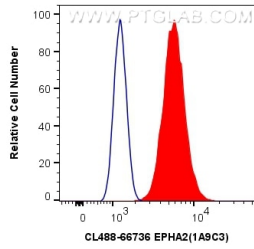
Aliquoting is unnecessary for -20°C storage

\*\*\* 20ul sizes contain 0.1% BSA

For technical support and original validation data for this product please contact:  
T: 1 (888) 4PTGLAB (1-888-478-4522) (toll free in USA), or 1(312) 455-8498 (outside USA)      E: proteintech@ptglab.com  
W: ptglab.com

This product is exclusively available under Proteintech Group brand and is not available to purchase from any other manufacturer.

## Selected Validation Data



1X10<sup>6</sup> A431 cells were intracellularly stained with 0.4 ug CoraLite® Plus 488 Anti-Human EPHA2 (CL488-66736, Clone:1A9C3) (red), or 0.4 ug Control Antibody. Cells were fixed with 4% PFA and permeabilized with Flow Cytometry Perm Buffer (PF00011-C).