

For Research Use Only

CoraLite® Plus 488-conjugated SYK Monoclonal antibody



Catalog Number: CL488-66721

Featured Product

Basic Information

Catalog Number: CL488-66721	GenBank Accession Number: BC001645	Purification Method: Protein A purification
Size: 100ul , Concentration: 1000 µg/ml by Nanodrop;	GeneID (NCBI): 6850	CloneNo.: 4C4A12
Source: Mouse	Full Name: spleen tyrosine kinase	Recommended Dilutions: WB 1:500-1:1000
Isotype: IgG2b	Calculated MW: 635 aa, 72 kDa	Excitation/Emission maxima wavelengths: 493 nm / 522 nm
Immunogen Catalog Number: AG17654	Observed MW: 70-75 kDa	

Applications

Tested Applications: WB	Positive Controls: WB : Daudi cells, Ramos cells, Raji cells
Species Specificity: Human	

Background Information

SYK(spleen tyrosine kinase) is a key regulator of signal transduction events,apoptosis and orderly cell cycle progression in B-lineage lymphoid cells. Although SYK has not been linked to a human disease, defective expression of the closely related T-cell tyrosine kinase ZAP-70 has been associated with severe combined immunodeficiency(PMID:11494125). This protein has 2 isoforms produced by alternative splicing.

Storage

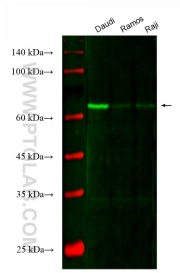
Storage:
Store at -20°C. Avoid exposure to light. Stable for one year after shipment.
Storage Buffer:
PBS with 50% Glycerol, 0.05% Proclin300, 0.5% BSA, pH 7.3.
Aliquoting is unnecessary for -20° C storage

*** 20ul sizes contain 0.1% BSA

For technical support and original validation data for this product please contact:
T: 1 (888) 4PTGLAB (1-888-478-4522) (toll free in USA), or 1(312) 455-8498 (outside USA)
E: proteintech@ptglab.com
W: ptglab.com

This product is exclusively available under Proteintech Group brand and is not available to purchase from any other manufacturer.

Selected Validation Data



Various lysates were subjected to SDS PAGE followed by western blot with CL488-66721 (SYK antibody) at dilution of 1:500 incubated at room temperature for 1.5 hours.