

For Research Use Only

# CoraLite® Plus 488-conjugated RGS4 Monoclonal antibody



Catalog Number: **CL488-66441**

## Basic Information

<b>Catalog Number:</b> CL488-66441	<b>GenBank Accession Number:</b> BC051869	<b>Purification Method:</b> Protein G purification
<b>Size:</b> 100ul , Concentration: 1000 µg/ml by Nanodrop;	<b>GeneID (NCBI):</b> 5999	<b>CloneNo.:</b> 1E2E2
<b>Source:</b> Mouse	<b>Full Name:</b> regulator of G-protein signaling 4	<b>Recommended Dilutions:</b> WB 1:500-1:2000
<b>Isotype:</b> IgG1	<b>Calculated MW:</b> 23 kDa	<b>Excitation/Emission maxima wavelengths:</b> 493 nm / 522 nm
<b>Immunogen Catalog Number:</b> AG6029	<b>Observed MW:</b> 34 kDa	

## Applications

<b>Tested Applications:</b> WB	<b>Positive Controls:</b> WB : C6 cells, Neuro-2a cells, Raji cells, SH-SY5Y cells
<b>Species Specificity:</b> human, rat, mouse, pig	

## Background Information

Regulator of G protein signaling (RGS) proteins are a large family of highly diverse, multifunctional signaling proteins. RGS4 is one of seven members of a classic R4 RGS protein that accelerates the GTPase activity of the Gai/o and Gaq/11 family members. RGS4 is highly expressed in multiple brain regions including the cerebral cortex, amygdala, hippocampus, and striatum. Extensive studies have demonstrated that RGS4 plays an important role in regulating smooth muscle contraction, cardiomyocyte development, neural plasticity and psychiatric disorders.

## Storage

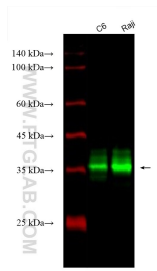
**Storage:**  
Store at -20°C. Avoid exposure to light. Stable for one year after shipment.  
**Storage Buffer:**  
PBS with 50% Glycerol, 0.05% Proclin300, 0.5% BSA, pH 7.3.  
Aliquoting is unnecessary for -20°C storage

**\*\*\* 20ul sizes contain 0.1%BSA**

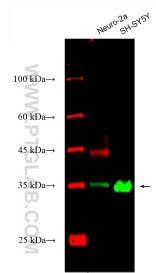
For technical support and original validation data for this product please contact:  
T: 1 (888) 4PTGLAB (1-888-478-4522) (toll free in USA), or 1(312) 455-8498 (outside USA)      E: proteintech@ptglab.com  
W: ptglab.com

**This product is exclusively available under Proteintech Group brand and is not available to purchase from any other manufacturer.**

## Selected Validation Data



Various lysates were subjected to SDS PAGE followed by western blot with CL488-66441 (RGS4 antibody) at dilution of 1:1000 incubated at room temperature for 1.5 hours.



Various lysates were subjected to SDS PAGE followed by western blot with CL488-66441 (RGS4 antibody) at dilution of 1:2000 incubated at room temperature for 1.5 hours.