

For Research Use Only

CoraLite® Plus 488-conjugated COPS2 Monoclonal antibody



Catalog Number: CL488-66435

Basic Information

Catalog Number: CL488-66435	GenBank Accession Number: BC012629	Purification Method: Protein G purification
Size: 100ul , Concentration: 1000 µg/ml by Nanodrop;	GeneID (NCBI): 9318	CloneNo.: 2H10E6
Source: Mouse	Full Name: COP9 constitutive photomorphogenic homolog subunit 2 (Arabidopsis)	Recommended Dilutions: IF 1:50-1:500
Isotype: IgG1	Calculated MW: 52 kDa	Excitation/Emission maxima wavelengths: 488 nm / 515 nm
Immunogen Catalog Number: AG1415	Observed MW: 52 kDa	

Applications

Tested Applications:

IF

Species Specificity:

human, mouse, rat

Positive Controls:

IF : human ovary cancer cells,

Background Information

COPS2 is an essential component of the COP9 signalosome complex (CSN), a complex involved in various cellular and developmental processes. The CSN complex is an essential regulator of the ubiquitin (Ubl) conjugation pathway by mediating the deneddylation of the cullin subunits of SCF-type E3 ligase complexes, leading to decrease the Ubl ligase activity of SCF-type complexes such as SCF, CSA or DDB2. The complex is also involved in phosphorylation of p53/TP53, c-jun/JUN, IkappaBalpha/NFKBIA, ITPK1 and IRF8/ICSBP, possibly via its association with CK2 and PKD kinases. CSN-dependent phosphorylation of TP53 and JUN promotes and protects degradation by the Ubl system, respectively.

Storage

Storage:

Store at -20°C. Avoid exposure to light.

Storage Buffer:

PBS with 50% Glycerol, 0.05% Proclin300, 0.5% BSA, pH 7.3.

Aliquoting is unnecessary for -20°C storage

*** 20ul sizes contain 0.1% BSA

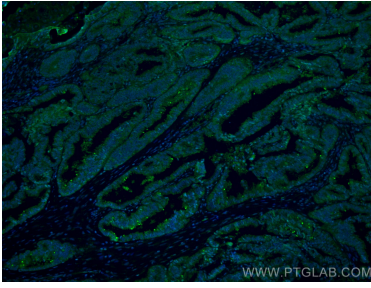
For technical support and original validation data for this product please contact:

T: 1 (888) 4PTGLAB (1-888-478-4522) (toll free
in USA), or 1(312) 455-8498 (outside USA)

E: proteintech@ptglab.com
W: ptglab.com

This product is exclusively available under Proteintech Group brand and is not available to purchase from any other manufacturer.

Selected Validation Data



Immunofluorescent analysis of (4% PFA) fixed human ovary cancer cells using CoraLite® Plus 488 COPS2 antibody (CL488-66435, Clone: 2H10E6) at dilution of 1:200.