

For Research Use Only

CoraLite® Plus 488-conjugated GLUT1 Monoclonal antibody



Catalog Number: CL488-66290

Featured Product

Basic Information

Catalog Number: CL488-66290	GenBank Accession Number: BC121804	Purification Method: Protein G purification
Size: 100ul , Concentration: 1000 µg/ml by Nanodrop;	GeneID (NCBI): 6513	CloneNo.: 2A5A2
Source: Mouse	Full Name: solute carrier family 2 (facilitated glucose transporter), member 1	Excitation/Emission maxima wavelengths: 493 nm / 522 nm
Isotype: IgG1	Calculated MW: 492 aa, 54 kDa	
Immunogen Catalog Number: AG17108	Observed MW: 45-55 kDa	

Applications

Tested Applications:
FC (Intra)

Species Specificity:
human, mouse

Background Information

GLUT1, also known as SLC2A1, is a ubiquitously expressed glucose transporter and is responsible for the basal level of glucose uptake in most cell types. Human erythrocytes express the highest level of the GLUT1. Defects in SLC2A1 are the cause of GLUT1 deficiency syndrome type 1 and type 2. High expression of GLUT1 has been reported to be a reliable immunohistochemical marker for juvenile hemangiomas. GLUT1 protein may appear as two or more distinct forms between 43 kDa to 55 kDa due to the different glycosylation states. The conversion of the highly glycosylated form of GLUT1 to a less glycosylated form has been reported to correlate to differentiation (PMID: 8263524, 23302780). 66290-1-Ig antibody can also detect the 130 kDa dimer protein in SDS-PAGE (PMID: 11681785).

Storage

Storage:
Store at -20°C. Avoid exposure to light. Stable for one year after shipment.

Storage Buffer:
PBS with 50% Glycerol, 0.05% Proclin300, 0.5% BSA, pH 7.3.

Aliquoting is unnecessary for -20°C storage

*** 20ul sizes contain 0.1% BSA

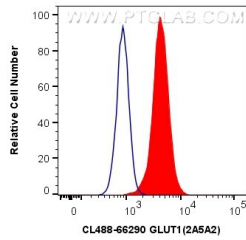
For technical support and original validation data for this product please contact:

T: 1 (888) 4PTGLAB (1-888-478-4522) (toll free
in USA), or 1(312) 455-8498 (outside USA)

E: proteintech@ptglab.com
W: ptglab.com

This product is exclusively available under Proteintech Group brand and is not available to purchase from any other manufacturer.

Selected Validation Data



1X10⁶ Jurkat cells were intracellularly stained with 0.4 ug CoraLite® Plus 488 Anti-Human GLUT1 (CL488-66290, Clone:2A5A2) (red), or 0.4 ug Control Antibody. Cells were fixed with 4% PFA and permeabilized with Flow Cytometry Perm Buffer (PF00011-C).