

For Research Use Only

CoraLite® Plus 488-conjugated KGA-Specific Monoclonal antibody



Catalog Number:CL488-66265

Basic Information

Catalog Number: CL488-66265	GenBank Accession Number: BC038507	Purification Method: Protein G purification
Size: 100ul , Concentration: 1000 µg/ml by Nanodrop;	GeneID (NCBI): 2744	CloneNo.: 1B11A11
Source: Mouse	Full Name: glutaminase	Recommended Dilutions: WB 1:500-1:1000 IF 1:50-1:500
Isotype: IgG1	Calculated MW: 669 aa, 73 kDa	Excitation/Emission maxima wavelengths: 493 nm / 522 nm
Immunogen Catalog Number: AG24227	Observed MW: 65 kDa	

Applications

Tested Applications: IF, WB	Positive Controls: WB : NIH/3T3 cells, mouse brain tissue IF : mouse brain tissue,
Species Specificity: human, mouse, rat	

Background Information

GLS, also named as GLS1 and KIAA0838, belongs to the glutaminase family. It catalyzes the first reaction in the primary pathway for the renal catabolism of glutamine. Glutaminase-, glutamate-, and taurine-immunoreactive neurons develop neurofibrillary tangles in Alzheimer's disease. The glutaminase band in AA/C1 cells is more intense than in HT29 cells, in accordance with measurements of glutaminase activity, and had the same molecular mass of approx. 63 kDa. The bands for both cell lines are clearly different in size from both rat liver glutaminase (58 kDa) and rat kidney glutaminase (65 kDa)(PMID: 12408749). It also reveals a molecular weight of 83-84 kDa as a phosphate-dependent glutaminase(PMID: 447624;7512428). It has 3 isoforms produced by alternative splicing named as KGA, GAM, GAC. This antibody is specific to KGA.

Storage

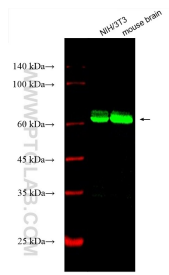
Storage:
Store at -20°C. Avoid exposure to light. Stable for one year after shipment.
Storage Buffer:
PBS with 50% Glycerol, 0.05% Proclin300, 0.5% BSA, pH 7.3.
Aliquoting is unnecessary for -20°C storage

*** 20ul sizes contain 0.1% BSA

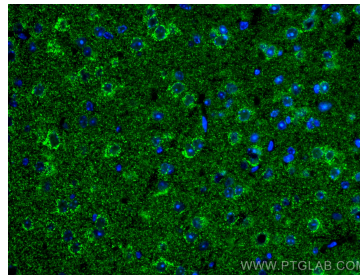
For technical support and original validation data for this product please contact:
T: 1 (888) 4PTGLAB (1-888-478-4522) (toll free in USA), or 1(312) 455-8498 (outside USA)
E: proteintech@ptglab.com
W: ptglab.com

This product is exclusively available under Proteintech Group brand and is not available to purchase from any other manufacturer.

Selected Validation Data



Various lysates were subjected to SDS PAGE followed by western blot with CL488-66265 (KGA-Specific antibody) at dilution of 1:500 incubated at room temperature for 1.5 hours.



Immunofluorescent analysis of (4% PFA) fixed mouse brain tissue using Coralite® Plus 488 KGA-Specific antibody (CL488-66265, Clone: 1B11A11) at dilution of 1:200.