

For Research Use Only

# CoraLite® Plus 488 Anti-Human CD85j / LILRB1 (GHI/75)



Catalog Number: **CL488-65238**

## Basic Information

<b>Catalog Number:</b> CL488-65238	<b>GenBank Accession Number:</b> BC015731	<b>Purification Method:</b> N/A
<b>Size:</b> 100tests , 5 ul/test	<b>GeneID (NCBI):</b> 10859	<b>CloneNo.:</b> GHI/75
<b>Source:</b> Mouse	<b>Full Name:</b> leukocyte immunoglobulin-like receptor, subfamily B (with TM and ITIM domains), member 1	<b>Excitation/Emission maxima wavelengths:</b> 493 nm / 522 nm
<b>Isotype:</b> IgG2b, kappa	<b>Calculated MW:</b> 71 kDa	

## Applications

**Tested Applications:**  
FC

**Species Specificity:**  
Human

## Background Information

### Storage

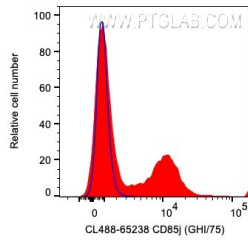
**Storage:**  
Store at 2-8°C. Avoid exposure to light. Stable for one year after shipment.

**Storage Buffer:**  
PBS with 0.09% sodium azide and 0.5% BSA.

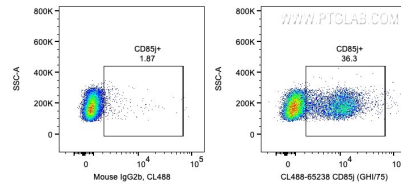
For technical support and original validation data for this product please contact:  
T: 1 (888) 4PTGLAB (1-888-478-4522) (toll free in USA), or 1(312) 455-8498 (outside USA)      E: [proteintech@ptglab.com](mailto:proteintech@ptglab.com)  
W: [ptglab.com](http://ptglab.com)

This product is exclusively available under Proteintech Group brand and is not available to purchase from any other manufacturer.

## Selected Validation Data



1X10<sup>6</sup> human PBMCs were surface stained with 5 ul CoraLite® Plus 488 Anti-Human CD85j / LILRB1 (CL488-65238, Clone:GHI/75) (red) or Mouse IgG2b Isotype Control. Cells were not fixed. Lymphocytes were gated.



1X10<sup>6</sup> human PBMCs were surface stained with 5 ul CoraLite® Plus 488 Anti-Human CD85j / LILRB1 (CL488-65238, Clone:GHI/75) or Mouse IgG2b Isotype Control. Cells were not fixed. Lymphocytes were gated.