

For Research Use Only

# CoraLite® Plus 488-conjugated STOML2 Monoclonal antibody



Catalog Number: CL488-60052

Featured Product

## Basic Information

<b>Catalog Number:</b> CL488-60052	<b>GenBank Accession Number:</b> BC002442	<b>Purification Method:</b> Protein A purification
<b>Size:</b> 100ul , Concentration: 1000 µg/ml by Nanodrop;	<b>GeneID (NCBI):</b> 30968	<b>CloneNo.:</b> 1A2E9
<b>Source:</b> Mouse	<b>Full Name:</b> stomatin (EPB72)-like 2	<b>Excitation/Emission maxima wavelengths:</b> 493 nm / 522 nm
<b>Isotype:</b> IgG2b	<b>Calculated MW:</b> 356 aa, 39 kDa	
<b>Immunogen Catalog Number:</b> AG0363	<b>Observed MW:</b> 39 kDa	

## Applications

**Tested Applications:**  
FC (Intra)

**Species Specificity:**  
human, mouse, rat, pig

## Background Information

Human stomatin (band 7.2b) is a 31-kDa erythrocyte membrane protein of unknown function but implicated in the control of ion channel permeability, mechanoreception, and lipid domain organization. Stomatin (EPB72)-like 2 (STOML2, synonyms: SLP-2, HSPC108) is a 38.5-kDa protein that is overall approximately 20% similar to human stomatin. STOML2 is also present in mature human erythrocytes, but lacks a characteristic NH(2)-terminal hydrophobic domain found in other stomatin homologues. STOML2 may link stomatin or other integral membrane proteins to the peripheral cytoskeleton and thereby play a role in regulating ion channel conductances or the organization of sphingolipid and cholesterol-rich lipid rafts.

## Storage

**Storage:**  
Store at -20°C. Avoid exposure to light. Stable for one year after shipment.

**Storage Buffer:**  
PBS with 50% Glycerol, 0.05% Proclin300, 0.5% BSA, pH 7.3.

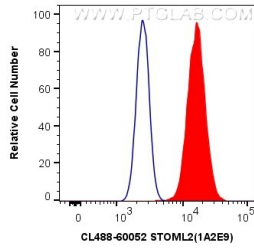
Aliquoting is unnecessary for -20°C storage

\*\*\* 20ul sizes contain 0.1% BSA

For technical support and original validation data for this product please contact:  
T: 1 (888) 4PTGLAB (1-888-478-4522) (toll free in USA), or 1(312) 455-8498 (outside USA) E: proteintech@ptglab.com W: ptglab.com

This product is exclusively available under Proteintech Group brand and is not available to purchase from any other manufacturer.

## Selected Validation Data



$1 \times 10^6$  HeLa cells were intracellularly stained with 0.4  $\mu$ g CoraLite® Plus 488 Anti-Human STOML2 (CL488-60052, Clone:1A2E9) (red), or 0.4  $\mu$ g Mouse IgG2b Isotype Control (CL488-66360-3, Clone: K11B8C4B5) (blue). Cells were fixed with 4% PFA and permeabilized with Flow Cytometry Perm Buffer (PF00011-C).