

For Research Use Only

# CoraLite® Plus 488-conjugated PKC Zeta Polyclonal antibody



Catalog Number: CL488-26899

## Basic Information

<b>Catalog Number:</b> CL488-26899	<b>GenBank Accession Number:</b> BC014270	<b>Purification Method:</b> Antigen affinity purification
<b>Size:</b> 100ul , Concentration: 1000 µg/ml by Nanodrop;	<b>GeneID (NCBI):</b> 5590	<b>Recommended Dilutions:</b> IF 1:50-1:500
<b>Source:</b> Rabbit	<b>Full Name:</b> protein kinase C, zeta	<b>Excitation/Emission maxima wavelengths:</b> 493 nm / 522 nm
<b>Isotype:</b> IgG	<b>Calculated MW:</b> 80 kDa	
<b>Immunogen Catalog Number:</b> AG25391	<b>Observed MW:</b> 67 kDa	

## Applications

<b>Tested Applications:</b> IF	<b>Positive Controls:</b> IF : NIH/3T3 cells, HeLa cells
<b>Species Specificity:</b> human, mouse	

## Background Information

Protein kinase C (PKC) zeta is a member of the PKC family of serine/threonine kinases which are involved in a variety of cellular processes such as proliferation, differentiation and secretion. Unlike the classical PKC isoenzymes which are calcium-dependent, PKC zeta exhibits a kinase activity which is independent of calcium and diacylglycerol but not of phosphatidylserine. Furthermore, it is insensitive to typical PKC inhibitors and cannot be activated by phorbol ester. Unlike the classical PKC isoenzymes, it has only a single zinc finger module. These structural and biochemical properties indicate that the zeta subspecies is related to, but distinct from other isoenzymes of PKC.

## Storage

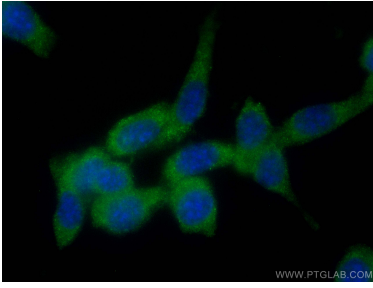
**Storage:**  
Store at -20°C. Avoid exposure to light. Stable for one year after shipment.  
**Storage Buffer:**  
PBS with 50% Glycerol, 0.05% Proclin300, 0.5% BSA, pH 7.3.  
Aliquoting is unnecessary for -20°C storage

\*\*\* 20ul sizes contain 0.1% BSA

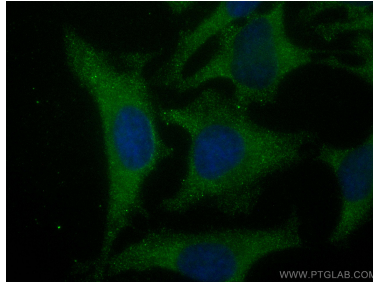
For technical support and original validation data for this product please contact:  
T: 1 (888) 4PTGLAB (1-888-478-4522) (toll free in USA), or 1(312) 455-8498 (outside USA) E: proteintech@ptglab.com W: ptglab.com

This product is exclusively available under Proteintech Group brand and is not available to purchase from any other manufacturer.

## Selected Validation Data



Immunofluorescent analysis of (-20°C Ethanol) fixed NIH/3T3 cells using CoraLite® Plus 488 PKC Zeta antibody (CL488-26899) at dilution of 1:200.



Immunofluorescent analysis of (-20°C Ethanol) fixed HeLa cells using CoraLite® Plus 488 PKC Zeta antibody (CL488-26899) at dilution of 1:200.