

For Research Use Only

CoraLite® Plus 488-conjugated Moesin Polyclonal antibody



Catalog Number: CL488-26053

Basic Information

Catalog Number: CL488-26053	GenBank Accession Number: BC017293	Purification Method: Antigen affinity purification
Size: 100ul , Concentration: 1000 µg/ml by Nanodrop;	GeneID (NCBI): 4478	Recommended Dilutions: IF 1:50-1:500
Source: Rabbit	Full Name: moesin	Excitation/Emission maxima wavelengths: 493 nm / 522 nm
Isotype: IgG	Calculated MW: 577 aa, 68 kDa	
Immunogen Catalog Number: AG23531	Observed MW: 68-70 kDa	

Applications

Tested Applications: IF	Positive Controls: IF : HepG2 cells,
Species Specificity: human, mouse, rat	

Background Information

Moesin belongs to the ezrin-radixin-moesin (ERM) family of proteins which act as cross-linkers between membrane and actin cytoskeleton. ERM proteins provide structural links to strengthen the cell cortex and facilitate several key cellular processes, including membrane dynamics, substrate adhesion, cell survival, cell adhesion, and motility. The function of ERM proteins is highly reliant on phosphorylation induced conformational changes in response to growth factor, chemokine, and antigen stimulation. This antibody may cross-react with ezrin or radixin with molecular weights around 68-70 kDa.

Storage

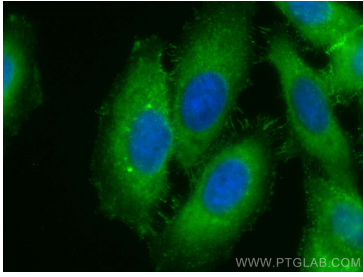
Storage:
Store at -20°C. Avoid exposure to light. Stable for one year after shipment.
Storage Buffer:
PBS with 50% Glycerol, 0.05% Proclin300, 0.5% BSA, pH 7.3.
Aliquoting is unnecessary for -20°C storage

*** 20ul sizes contain 0.1% BSA

For technical support and original validation data for this product please contact:
T: 1 (888) 4PTGLAB (1-888-478-4522) (toll free in USA), or 1(312) 455-8498 (outside USA)
E: proteintech@ptglab.com
W: ptglab.com

This product is exclusively available under Proteintech Group brand and is not available to purchase from any other manufacturer.

Selected Validation Data



Immunofluorescent analysis of (-20°C Methanol) fixed HepG2 cells using CoraLite® Plus 488 Moesin antibody (CL488-26053) at dilution of 1:200.