

For Research Use Only

# CoraLite® Plus 488-conjugated P27; KIP1 Polyclonal antibody



Catalog Number: CL488-25614

Featured Product

## Basic Information

<b>Catalog Number:</b> CL488-25614	<b>GenBank Accession Number:</b> BC001971	<b>Purification Method:</b> Antigen affinity purification
<b>Size:</b> 100ul , Concentration: 1000 µg/ml by Nanodrop;	<b>GeneID (NCBI):</b> 1027	<b>Recommended Dilutions:</b> IF 1:50-1:500
<b>Source:</b> Rabbit	<b>Full Name:</b> cyclin-dependent kinase inhibitor 1B (p27, Kip1)	<b>Excitation/Emission maximum wavelengths:</b> 493 nm / 522 nm
<b>Isotype:</b> IgG	<b>Calculated MW:</b> 198 aa, 22 kDa	
<b>Immunogen Catalog Number:</b> AG22582	<b>Observed MW:</b> 27 kDa	

## Applications

<b>Tested Applications:</b> IF	<b>Positive Controls:</b> IF : mouse testis tissue,
<b>Species Specificity:</b> human, mouse	

## Background Information

CDKN1B, also named as P27 or KIP1, is a cyclin-dependent kinase inhibitor, which shares a limited similarity with CDK inhibitor CDKN1A/p21. P27 binds to and prevents the activation of cyclin E-CDK2 or cyclin D-CDK4 complexes, and thus controlling cell cycle progression at G1. The degradation of this protein, which is triggered by its CDK dependent phosphorylation and subsequent ubiquitination by SCF complexes, is required for the cellular transition from quiescence to the proliferative state. Downregulation of P27 has been implicated in the progression of several malignancies, including lung cancer, hepatocellular carcinoma, salivary cancer, oral squamous cell carcinomas, and gastric cancer.

## Storage

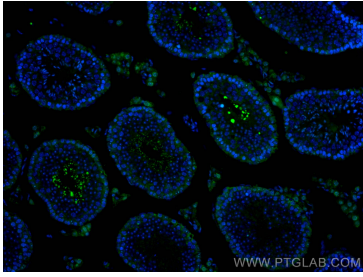
**Storage:**  
Store at -20°C. Avoid exposure to light. Stable for one year after shipment.  
**Storage Buffer:**  
PBS with 50% Glycerol, 0.05% Proclin300, 0.5% BSA, pH 7.3.  
Aliquoting is unnecessary for -20°C storage

\*\*\* 20ul sizes contain 0.1% BSA

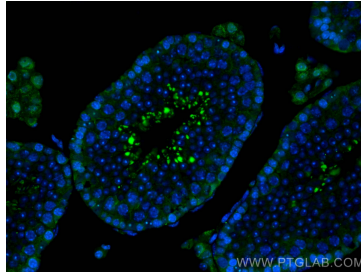
For technical support and original validation data for this product please contact:  
T: 1 (888) 4PTGLAB (1-888-478-4522) (toll free in USA), or 1(312) 455-8498 (outside USA)  
E: proteintech@ptglab.com  
W: ptglab.com

This product is exclusively available under Proteintech Group brand and is not available to purchase from any other manufacturer.

## Selected Validation Data



Immunofluorescent analysis of (4% PFA) fixed mouse testis tissue using CoraLite® Plus 488 P27; KIP1 antibody (CL488-25614) at dilution of 1:200.



Immunofluorescent analysis of (4% PFA) fixed mouse testis tissue using CoraLite® Plus 488 P27; KIP1 antibody (CL488-25614) at dilution of 1:200.