

For Research Use Only

CoraLite® Plus 488-conjugated RS1 Polyclonal antibody



Catalog Number: CL488-24430

Basic Information

Catalog Number: CL488-24430	GenBank Accession Number: BC141638	Purification Method: Antigen affinity purification
Size: 100ul , Concentration: 1000 µg/ml by Nanodrop;	GeneID (NCBI): 6247	Recommended Dilutions: IF 1:50-1:500
Source: Rabbit	Full Name: retinoschisin 1	Excitation/Emission maxima wavelengths: 493 nm / 522 nm
Isotype: IgG	Calculated MW: 26 kDa	
Immunogen Catalog Number: AG18885	Observed MW: 26 kDa	

Applications

Tested Applications: IF	Positive Controls: IF : hTERT-RPE1 cells,
Species Specificity: human, mouse, rat	

Background Information

RS1 is also named as XLR51. RS1 can bind negatively charged membrane lipids, such as phosphatidylserine and phosphoinositides. RS1 is required for normal structure and function of the retina (PMID:19093009). It may play a role in cell-cell adhesion processes in the retina (PMID:27114531). RS1 is high expression in the retina (at protein level) (PMID:10915776, PMID:9326935). It is detected in the inner segment of the photoreceptors, the inner nuclear layer, the inner plexiform layer and the ganglion cell layer. At the macula, it is expressed in both the outer and inner nuclear layers and in the inner plexiform layer (PMID:10915776, PMID:10915776). And RS1 is undetectable in the inner plexiform layers and the inner nuclear layer (PMID:10915776)

Storage

Storage:
Store at -20°C. Avoid exposure to light. Stable for one year after shipment.
Storage Buffer:
PBS with 50% Glycerol, 0.05% Proclin300, 0.5% BSA, pH 7.3.
Aliquoting is unnecessary for -20°C storage

*** 20ul sizes contain 0.1% BSA

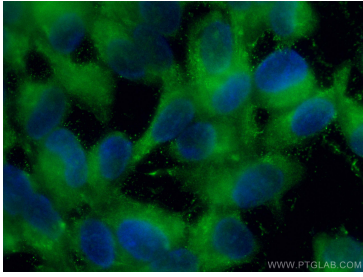
For technical support and original validation data for this product please contact:

T: 1 (888) 4PTGLAB (1-888-478-4522) (toll free
in USA), or 1(312) 455-8498 (outside USA)

E: proteintech@ptglab.com
W: ptglab.com

This product is exclusively available under Proteintech Group brand and is not available to purchase from any other manufacturer.

Selected Validation Data



Immunofluorescent analysis of (-20°C Methanol) fixed hTERT-RPE1 cells using Coralite® Plus 488 RS1 antibody (CL488-24430) at dilution of 1:200.