

For Research Use Only

CoraLite® Plus 488-conjugated Rac1 Polyclonal antibody



Catalog Number: CL488-24072

Featured Product

Basic Information

Catalog Number: CL488-24072	GenBank Accession Number: BC004247	Purification Method: Antigen affinity purification
Size: 100ul , Concentration: 1000 µg/ml by Nanodrop;	GeneID (NCBI): 5879	Recommended Dilutions: IF 1:50-1:500
Source: Rabbit	Full Name: ras-related C3 botulinum toxin substrate 1 (rho family, small GTP binding protein Rac1)	Excitation/Emission maximum wavelengths: 493 nm / 522 nm
Isotype: IgG	Calculated MW: 21 kDa	
Immunogen Catalog Number: AG17779	Observed MW: 21 kDa	

Applications

Tested Applications: IF	Positive Controls: IF : HeLa cells,
Species Specificity: human, mouse, rat	

Background Information

RAC1b, also named as TC25, belongs to the small GTPase superfamily and Rho family. RAC1 is a plasma membrane-associated small GTPase which cycles between active GTP-bound and inactive GDP-bound states. In its active state, it binds to a variety of effector proteins to regulate cellular responses such as secretory processes, phagocytosis of apoptotic cells, epithelial cell polarization and growth-factor induced formation of membrane ruffles.

Storage

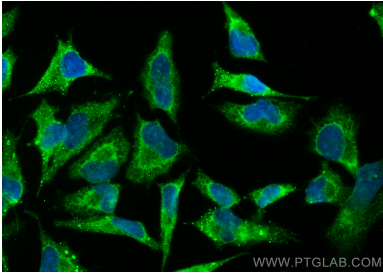
Storage:
Store at -20°C. Avoid exposure to light. Stable for one year after shipment.
Storage Buffer:
PBS with 50% Glycerol, 0.05% Proclin300, 0.5% BSA, pH 7.3.
Aliquoting is unnecessary for -20°C storage

*** 20ul sizes contain 0.1% BSA

For technical support and original validation data for this product please contact:
T: 1 (888) 4PTGLAB (1-888-478-4522) (toll free in USA), or 1(312) 455-8498 (outside USA)
E: proteintech@ptglab.com
W: ptglab.com

This product is exclusively available under Proteintech Group brand and is not available to purchase from any other manufacturer.

Selected Validation Data



Immunofluorescent analysis of (-20°C Methanol) fixed HeLa cells using Coralite® Plus 488 Rac1 antibody (CL488-24072) at dilution of 1:200.