

For Research Use Only

# CoraLite® Plus 488-conjugated DEPDC6/Deptor Polyclonal antibody



Catalog Number: CL488-20985

## Basic Information

<b>Catalog Number:</b> CL488-20985	<b>GenBank Accession Number:</b> NM_022783	<b>Purification Method:</b> Antigen affinity purification
<b>Size:</b> 100ul , Concentration: 1000 µg/ml by Nanodrop;	<b>GeneID (NCBI):</b> 64798	<b>Recommended Dilutions:</b> IF 1:200-1:800
<b>Source:</b> Rabbit	<b>Full Name:</b> DEP domain containing 6	<b>Excitation/Emission maxima wavelengths:</b> 493 nm / 522 nm
<b>Isotype:</b> IgG	<b>Calculated MW:</b> 46 kDa	
	<b>Observed MW:</b> 40-45 kDa	

## Applications

<b>Tested Applications:</b> IF	<b>Positive Controls:</b> IF : HepG2 cells,
<b>Species Specificity:</b> human, mouse, rat	

## Background Information

DEPDC6, also named as DEPTOR, was identified as a novel mTOR-interacting protein whose over-expression in certain cell types represents a new mechanism for activating PI3K/Akt signaling and promoting cell survival. It negative regulator of the mTORC1 and mTORC2 signaling pathways. DEPDC6 inhibits the kinase activity of both complexes. The antibody is specific to DEPDC6.

## Storage

**Storage:**  
Store at -20°C. Avoid exposure to light. Stable for one year after shipment.  
**Storage Buffer:**  
PBS with 50% Glycerol, 0.05% Proclin300, 0.5% BSA, pH 7.3.  
Aliquoting is unnecessary for -20°C storage

\*\*\* 20ul sizes contain 0.1% BSA

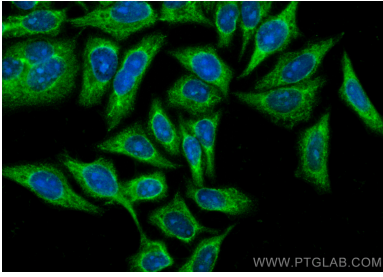
For technical support and original validation data for this product please contact:

T: 1 (888) 4PTGLAB (1-888-478-4522) (toll free  
in USA), or 1(312) 455-8498 (outside USA)

E: [proteintech@ptglab.com](mailto:proteintech@ptglab.com)  
W: [ptglab.com](http://ptglab.com)

This product is exclusively available under Proteintech Group brand and is not available to purchase from any other manufacturer.

## Selected Validation Data



Immunofluorescent analysis of (-20°C Ethanol) fixed HepG2 cells using CoraLite® Plus 488 DEPDC6/Deptor antibody (CL488-20985) at dilution of 1:400.