

For Research Use Only

CoraLite® Plus 488-conjugated TIPE2 Polyclonal antibody



Catalog Number: CL488-15940

Featured Product

Basic Information

Catalog Number: CL488-15940	GenBank Accession Number: BC063014	Purification Method: Antigen affinity purification
Size: 100ul , Concentration: 1000 mg/ml by 79626 Nanodrop;	GeneID (NCBI): 79626	Excitation/Emission maxima wavelengths: 493 nm / 522 nm
Source: Rabbit	Full Name: tumor necrosis factor, alpha-induced protein 8-like 2	
Isotype: IgG	Calculated MW: 184 aa, 21 kDa	
Immunogen Catalog Number: AG7964	Observed MW: 18-20 kDa	

Applications

Tested Applications:
FC (Intra)

Species Specificity:
human, mouse, rat

Background Information

TIPE2 (TNF- α -inducible protein 8-like 2, or TNFAIP8L2), a negative immune regulator, is essential for maintaining immune homeostasis. TIPE2 shares considerable sequence homology with members of the tumor necrosis factor- α -inducible protein 8 (TNFAIP8) family, which are thought to regulate cellular and immune homeostasis. TIPE2 acts as a negative regulator of Toll-like receptor and T-cell receptor function and is preferentially expressed in lymphoid tissues. TIPE2 plays an essential role for a signal transduction pathway that links inflammatory immune response to specific conditions after cerebral ischemia

Storage

Storage:
Store at -20°C. Avoid exposure to light. Stable for one year after shipment.

Storage Buffer:
PBS with 50% Glycerol, 0.05% Proclin300, 0.5% BSA, pH 7.3.

Aliquoting is unnecessary for -20°C storage

*** 20ul sizes contain 0.1% BSA

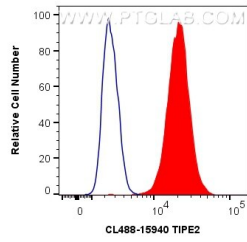
For technical support and original validation data for this product please contact:

T: 1 (888) 4PTGLAB (1-888-478-4522) (toll free
in USA), or 1(312) 455-8498 (outside USA)

E: proteintech@ptglab.com
W: ptglab.com

This product is exclusively available under Proteintech Group brand and is not available to purchase from any other manufacturer.

Selected Validation Data



1×10^6 THP-1 cells were intracellularly stained with 0.4 μ g CoraLite® Plus 488 Anti-Human TIPE2 (CL488-15940) (red), or 0.4 μ g Isotype Control. Cells were fixed with 4% PFA and permeabilized with Flow Cytometry Perm Buffer (PF00011-C).