

For Research Use Only

CoraLite® Plus 488-conjugated GREM2 Polyclonal antibody



Catalog Number: **CL488-13892**

Basic Information

Catalog Number: CL488-13892	GenBank Accession Number: BC046632	Purification Method: Antigen affinity purification
Size: 100ul , Concentration: 1000 µg/ml by Nanodrop;	GeneID (NCBI): 64388	Recommended Dilutions: IF 1:50-1:500
Source: Rabbit	Full Name: gremlin 2, cysteine knot superfamily, homolog (Xenopus laevis)	Excitation/Emission maxima wavelengths: 493 nm / 522 nm
Isotype: IgG	Calculated MW: 168 aa, 19 kDa	
Immunogen Catalog Number: AG4854		

Applications

Tested Applications: FC (Intra), IF	Positive Controls: IF : mouse kidney tissue,
Species Specificity: human, mouse	

Background Information

Storage

Storage:
Store at -20°C. Avoid exposure to light. Stable for one year after shipment.
Storage Buffer:
PBS with 50% Glycerol, 0.05% Proclin300, 0.5% BSA, pH 7.3.
Aliquoting is unnecessary for -20°C storage

***** 20ul sizes contain 0.1% BSA**

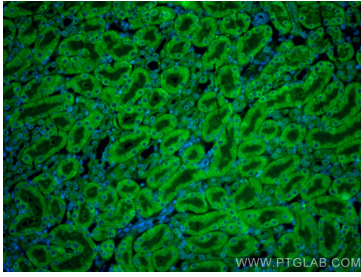
For technical support and original validation data for this product please contact:

T: 1 (888) 4PTGLAB (1-888-478-4522) (toll free
in USA), or 1(312) 455-8498 (outside USA)

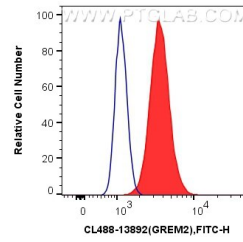
E: proteintech@ptglab.com
W: ptglab.com

**This product is exclusively available under Proteintech
Group brand and is not available to purchase from any
other manufacturer.**

Selected Validation Data



Immunofluorescent analysis of (4% PFA) fixed mouse kidney tissue using CoralLite® Plus 488 GREM2 antibody (CL488-13892) at dilution of 1:200.



1X10⁶ HCT 116 cells were intracellularly stained with 0.4 ug CoralLite® Plus 488 Anti-Human GREM2 (CL488-13892) (red), or 0.4 ug CoralLite® Plus 488-conjugated Rabbit IgG control Rabbit PolyAb (CL488-30000, Clone:) (blue). Cells were fixed with 4% PFA and permeabilized with Flow Cytometry Perm Buffer (PF00011-C).