

For Research Use Only

CoraLite® Plus 488-conjugated RAB10 Polyclonal antibody



Catalog Number: CL488-11808

Featured Product

Basic Information

Catalog Number: CL488-11808	GenBank Accession Number: BC000896	Purification Method: Antigen affinity purification
Size: 100ul , Concentration: 1000 µg/ml by Nanodrop;	GeneID (NCBI): 10890	Recommended Dilutions: IF 1:50-1:500
Source: Rabbit	Full Name: RAB10, member RAS oncogene family	Excitation/Emission maxima wavelengths: 493 nm / 522 nm
Isotype: IgG	Calculated MW: 200 aa, 23 kDa	
Immunogen Catalog Number: AG2473	Observed MW: 23 kDa	

Applications

Tested Applications: IF	Positive Controls: IF : NIH/3T3 cells, MCF-7 cells
Species Specificity: human, mouse, rat, Canine	

Background Information

RAB10 belongs to the RAS superfamily of small GTPases. RAB10 localizes to a system of tubules and vesicles, and it may be involved in vesicular trafficking and neurotransmitter release. It is also associated with Glut4 translocation in adipocytes.

Storage

Storage:
Store at -20°C. Avoid exposure to light. Stable for one year after shipment.
Storage Buffer:
PBS with 50% Glycerol, 0.05% Proclin300, 0.5% BSA, pH 7.3.
Aliquoting is unnecessary for -20°C storage

*** 20ul sizes contain 0.1% BSA

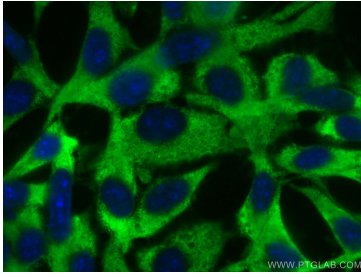
For technical support and original validation data for this product please contact:

T: 1 (888) 4PTGLAB (1-888-478-4522) (toll free
in USA), or 1(312) 455-8498 (outside USA)

E: proteintech@ptglab.com
W: ptglab.com

This product is exclusively available under Proteintech Group brand and is not available to purchase from any other manufacturer.

Selected Validation Data



Immunofluorescent analysis of (-20°C Ethanol)
fixed NIH/3T3 cells using CoraLite® Plus 488
RAB10 antibody (CL488-11808) at dilution of 1:200.