

For Research Use Only

# CoraLite® Plus 488-conjugated CDK1 Polyclonal antibody



Catalog Number: **CL488-10762**

Featured Product

## Basic Information

Catalog Number: CL488-10762	GenBank Accession Number: BC014563	Purification Method: Antigen affinity purification
Size: 100ul , Concentration: 1000 µg/ml by Nanodrop;	GeneID (NCBI): 983	Excitation/Emission maxima wavelengths: 493 nm / 522 nm
Source: Rabbit	Full Name: cell division cycle 2, G1 to S and G2 to M	
Isotype: IgG	Calculated MW: 25 kDa	
Immunogen Catalog Number: AG1183	Observed MW: 34 kDa	

## Applications

Tested Applications:  
FC (Intra)  
  
Species Specificity:  
human

## Background Information

CDK1, also named as CDC2, belongs to the protein kinase superfamily, CMGC Ser/Thr protein kinase family and CDC2/CDKX subfamily. CDK1 plays a key role in the control of the eukaryotic cell cycle. It is required in higher cells for entry into S-phase and mitosis. CDK1 is a catalytic subunit of the highly conserved protein kinase complex known as M-phase promoting factor (MPF), which is essential for G1/S and G2/M phase transitions of eukaryotic cell cycle. It is a component of the kinase complex that phosphorylates the repetitive C-terminus of RNA polymerase II. Mitotic cyclins stably associate with CDK1 and function as regulatory subunits. CDK1 has 2 isoforms produced by alternative splicing with the molecular mass of 34 kDa and 27 kDa. This antibody may have cross reaction with CDK2.

## Storage

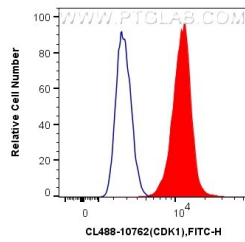
Storage:  
Store at -20°C. Avoid exposure to light. Stable for one year after shipment.  
Storage Buffer:  
PBS with 50% Glycerol, 0.05% Proclin300, 0.5% BSA, pH 7.3.  
Aliquoting is unnecessary for -20°C storage

\*\*\* 20ul sizes contain 0.1% BSA

For technical support and original validation data for this product please contact:  
T: 1 (888) 4PTGLAB (1-888-478-4522) (toll free in USA), or 1(312) 455-8498 (outside USA)  
E: [proteintech@ptglab.com](mailto:proteintech@ptglab.com)  
W: [ptglab.com](http://ptglab.com)

This product is exclusively available under Proteintech Group brand and is not available to purchase from any other manufacturer.

## Selected Validation Data



1X10<sup>6</sup> HeLa cells were intracellularly stained with 0.4 ug CoraLite® Plus 488 Anti-Human CDK1 (CL488-10762) (red), or 0.4 ug CoraLite® Plus 488-conjugated Rabbit IgG control Rabbit PolyAb (CL488-30000, Clone: ) (blue). Cells were fixed and permeabilized with True-Nuclear Transcription Factor Buffer Set.