

For Research Use Only

CoraLite® Plus 405 Anti-Human CD1a (HI149)



Catalog Number: **CL405-65172**

Basic Information

Catalog Number: CL405-65172	GenBank Accession Number: BC031645	Purification Method: Affinity purification
Size: 100tests , 5 µl/test	GeneID (NCBI): 909	CloneNo.: HI149
Source: Mouse	Full Name: CD1a molecule	Excitation/Emission maxima wavelengths: 399 nm / 422 nm
Isotype: IgG1, kappa	Calculated MW: 327 aa, 37 kDa	

Applications

Tested Applications:
FC

Species Specificity:
Human

Background Information

CD1a is an antigen-presenting protein that binds self and non-self lipid and glycolipid antigens and presents them to T-cell receptors on natural killer T-cells. During protein synthesis and maturation, CD1 family members bind endogenous lipids that are replaced by lipid or glycolipid antigens when the proteins are internalized and pass through endosomes, before trafficking back to the cell surface.

Storage

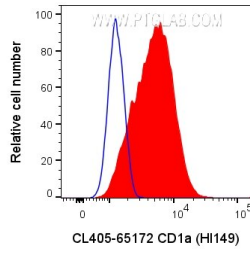
Storage:
Store at 2-8°C. Avoid exposure to light. Stable for one year after shipment.

Storage Buffer:
PBS with 0.09% sodium azide and 0.5% BSA.

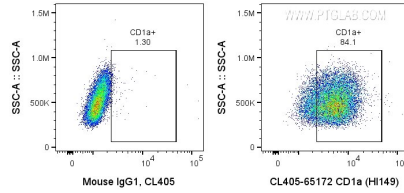
For technical support and original validation data for this product please contact:
T: 1 (888) 4PTGLAB (1-888-478-4522) (toll free in USA), or 1(312) 455-8498 (outside USA) E: proteintech@ptglab.com
W: ptglab.com

This product is exclusively available under Proteintech Group brand and is not available to purchase from any other manufacturer.

Selected Validation Data



1X10⁶ MOLT-4 cells were surface stained with 5 ul CoraLite® Plus 405 Anti-Human CD1a (CL405-65172, Clone:HI149), or Mouse IgG1 Isotype Control. Cells were not fixed.



1X10⁶ MOLT-4 cells were surface stained with 5 ul CoraLite® Plus 405 Anti-Human CD1a (CL405-65172, Clone:HI149), or Mouse IgG1 Isotype Control. Cells were not fixed.