

FOR IN VITRO RESEARCH USE ONLY.  
NOT FOR USE IN HUMANS OR ANIMALS.

# STARD8 Fusion Protein

## Basic Information

**Catalog Number:**  
Ag4865

**Form:**  
Available lyophilized

**Species:**  
human

**Expression Source:**  
*e. coli*-derived, PET28a, with N-terminal 6<sup>°</sup>His.

**Biological Activity:**  
Not tested

**Endotoxin Level:**  
Please contact the lab for more information

**Validated Application:**  
Blocking peptide

**Peptide Sequence:**  
PAWAQAEVQPAVLAPAQAPAEAPVAQEEAEAPA  
PAPAPAPAQDSEQEAHSGGEPFASLSVVEEGHSISD  
TVASSSELDSSGNSMNEAEAAGPLAGLQASMPRERR  
DSGVGASLTPCRKLRWHSFQNSHRPSLNSESLEINR  
QFAGQINLLHKGSLRLTAFMEKYTVPHKQGWVWSM  
PKFMRRNKTPDYRQGHVFGVPLIHVQRTGQPLPQSI  
QQAMRYLRSQCLDQVGFIRKSGVKSRIQNLRQMNET  
SPDNV CYEGQSA YDVA DLLKQ YFRDLPEPIFTSKLTTT  
FLQIQYLLPKDQWLAQAQAATLLLPDENREVLQTLTYF  
LSDIASAEENQMTAGNLAVCLAPSIFHLNVSKKIDSPS  
PRIKSKRSLIGRPGPDLSDNMAATQGLSHMISDCKKL  
FQVPQDMVLQCCSSYSAEELSPGPALAEALRQAQAA  
GVLSLYMEENIQDLLRDAERFKGWMSVPGPQHTEL  
ACRKA PDGHPLRLWKASTEVA APPAVV LHRVLRERAL  
WDEDLLRAQVLEALMPGVELYHYVTDSMAPHPC RDF  
VVLRMWRSDLP RGGCLLSVQS LDP EQVPV PEGV RAL  
MLTSQYLM EPCGLGRSRLTHICRADLRGRSPDWYNKV  
FGHLCA MEVAKIRDSFPTLQAAGPETKL  
(373-1023 aa encoded by BC035587)

## Reconstitution and Storage

**Reconstitution:**  
Reconstitute at 0.25 µg/µl in 200 µl sterile water for short-term storage.  
After reconstitution with sterile water, if glycerol has no effect on subsequent experiments, it is recommended to add an equal volume of glycerol for long-term storage (see Stability and Storage for more details).  
If a different concentration is needed for your purposes please adjust the reconstitution volume as required (please note: the ion concentration of the final solution will vary according to the volume used).  
**Note:** Centrifuge vial before opening. When reconstituting, gently pipet and wash down the sides of the vial to ensure full recovery of the protein into solution.

**Shipping:**  
The product is shipped at ambient temperature. Upon receipt, store it immediately at the recommended temperature (see below).

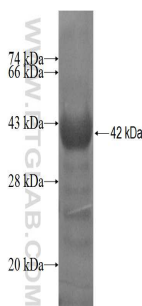
## Stability and Storage

Store for up to 12 months at -20°C to -80°C as lyophilized powder.

## Storage of Reconstituted Protein

**Short Term Storage:**  
Store at 2-8°C for (1-2 weeks).  
**Long Term Storage:**  
Aliquot and store at -20°C to -80°C for up to 3 months, reconstitution with sterile water and addition of an equal volume of glycerol. Avoid repeat freeze-thaw cycles.

## Selected Validation Data



For technical support and original validation data for this product please contact:  
T: 1 (888) 4PTGLAB (1-888-478-4522) (toll free in USA), or 1(312) 455-8498 (outside USA)  
E: [proteintech@ptglab.com](mailto:proteintech@ptglab.com)

This product is exclusively available under Proteintech Group brand and is not available to purchase from any other manufacturer.