

FOR IN VITRO RESEARCH USE ONLY.  
NOT FOR USE IN HUMANS OR ANIMALS.

# IWS1 Fusion Protein

## Basic Information

### Catalog Number:

Ag10649

### Size:

50 µg

### Form:

Available lyophilized

### Species:

human

### Expression Source:

*e coli*-derived, PET28a, with N-terminal 6\*His.

### Biological Activity:

Not tested

### Endotoxin Level:

Please contact the lab for more information

### Validated Application:

Blocking peptide

### Peptide Sequence:

HMDFLSDFEMMLQRRKMSGKRRRRNRDGGTFISDAD  
DVVSAMIVKMNEAAEEDRQLNNQKPKALKLTLLPAV  
VMHLKKQDLKETFIDSGVMSAIKEWLSPLDRSLPALK  
IREELLKILQELPSVSQETLKHSGIGRAVMYLYKHPKES  
RSNKDMAAGKLI NEWSRPIFGLTSNYKGMTREEREQRD  
LEQMPQRRRMNSTGGQTPRRDLEKVLTGEEKALRPGD  
PGFCARARVPMPSNKDYVVRPKWNVEMESSRFQAT  
SKKGISRLDKQMRKFTDIRKKSRSAAHVKISIEGNKMPL  
(523-819 aa encoded by BC017012)

## Reconstitution and Storage

### Reconstitution:

Reconstitute at 0.25 µg/µl in 200 µl sterile water for short-term storage.

After reconstitution with sterile water, if glycerol has no effect on subsequent experiments, it is recommended to add an equal volume of glycerol for long-term storage (see Stability and Storage for more details).

If a different concentration is needed for your purposes please adjust the reconstitution volume as required (please note: the ion concentration of the final solution will vary according to the volume used).

Note: Centrifuge vial before opening. When reconstituting, gently pipet and wash down the sides of the vial to ensure full recovery of the protein into solution.

### Shipping:

The product is shipped at ambient temperature. Upon receipt, store it immediately at the recommended temperature (see below).

## Stability and Storage

Store for up to 12 months at -20°C to -80°C as lyophilized powder.

## Storage of Reconstituted Protein

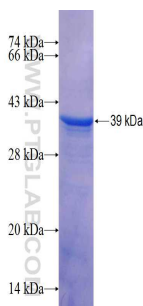
### Short Term Storage:

Store at 2-8°C for (1-2 weeks).

### Long Term Storage:

Aliquot and store at -20°C to -80°C for up to 3 months, reconstitution with sterile water and addition of an equal volume of glycerol. Avoid repeat freeze-thaw cycles.

## Selected Validation Data



For technical support and original validation data for this product please contact:

T: 1 (888) 4PTGLAB (1-888-478-4522)  
(toll free in USA), or 1(312) 455-8498  
(outside USA)

E : [proteintech@ptglab.com](mailto:proteintech@ptglab.com) W:  
[ptglab.com](http://ptglab.com)

This product is exclusively available under Proteintech Group brand and is not available to purchase from any other manufacturer.