

For Research Use Only

c-Met (Cytoplasmic) Recombinant antibody

Catalog Number: 82904-1-RR



Basic Information

Catalog Number:

82904-1-RR

Size:

100ul, Concentration: 1000 µg/ml by Nanodrop;

Source:

Rabbit

Isotype:

IgG

Immunogen Catalog Number:

AG23140

GenBank Accession Number:

BC130420

GeneID (NCBI):

4233

UNIPROT ID:

P08581

Full Name:

met proto-oncogene (hepatocyte growth factor receptor)

Calculated MW:

1390 aa, 155 kDa

Observed MW:

140 kDa

Purification Method:

Protein A purification

CloneNo.:

2G12

Recommended Dilutions:

WB: 1:2000-1:10000

FC (Intra): 0.25 µg per 10⁶ cells in a 100 µl suspension

Applications

Tested Applications:

WB, FC (Intra), ELISA

Species Specificity:

human, mouse, rat

Positive Controls:

WB : HepG2 cells, HEK-293 cells, mouse liver tissue, rat liver tissue

FC (Intra) : HeLa cells,

Background Information

c-Met (also named MET or HGFR) is a receptor tyrosine kinase that transduces signals from the extracellular matrix into the cytoplasm by binding to the HGF ligand. c-Met regulates many physiological processes including proliferation, scattering, morphogenesis, and survival. The primary single-chain precursor protein is post-translationally cleaved to produce the alpha and beta subunits, which are disulfide-linked to form the mature receptor. Overexpression and/or mutation of c-Met has been reported in various human malignancies, including lung cancer, breast cancer, head and neck cancer, gastric cancer, colorectal cancer, bladder cancer, uterine cervix carcinoma, esophageal carcinoma, c-Met could serve as an important therapeutic target (PMID: 26036285). The c-met receptor is a 190-kD glycoprotein consisting of a 145-kD membrane-spanning beta chain and a 50-kD alpha chain (PMID: 7806559). In Western blot, this antibody produces bands of unknown identity at 55 and 100 kDa.

Storage

Storage:

Store at -20°C. Stable for one year after shipment.

Storage Buffer:

PBS with 0.02% sodium azide and 50% glycerol, pH7.3

Aliquoting is unnecessary for -20°C storage

*** 20ul sizes contain 0.1% BSA

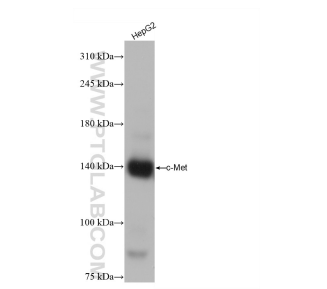
For technical support and original validation data for this product please contact:

T: 1 (888) 4PTGLAB (1-888-478-4522) (toll free in USA), or 1(312) 455-8498 (outside USA)

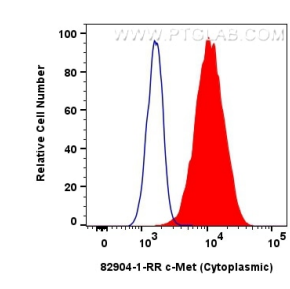
E: proteintech@ptglab.com
W: ptglab.com

This product is exclusively available under Proteintech Group brand and is not available to purchase from any other manufacturer.

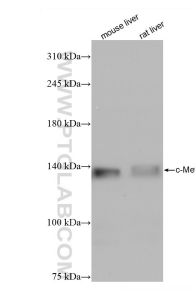
Selected Validation Data



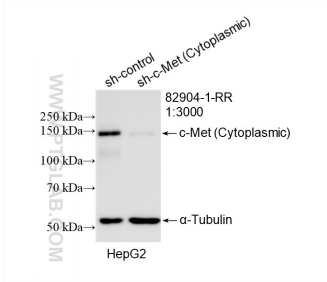
HepG2 cells were subjected to SDS PAGE followed by western blot with 82904-1-RR (c-Met antibody) at dilution of 1:5000 incubated at room temperature for 1.5 hours.



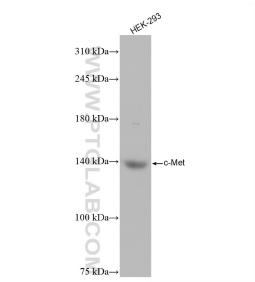
1x10⁶ HeLa cells were intracellularly stained with 0.25 ug c-Met (Cytoplasmic) Recombinant antibody (82904-1-RR, Clone:2G12) and CoraLite®488-Conjugated AffiniPure Goat Anti-Rabbit IgG(H+L) (SA00013-2)(red), or 0.25 ug Isotype Control (blue). Cells were fixed with 4% PFA and permeabilized with Flow Cytometry Perm Buffer (PF00011-C).



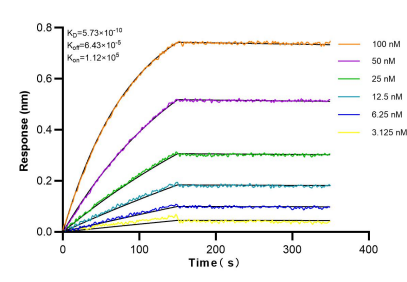
Various lysates were subjected to SDS PAGE followed by western blot with 82904-1-RR (c-Met antibody) at dilution of 1:5000 incubated at room temperature for 1.5 hours.



WB result of c-Met (Cytoplasmic) antibody (82904-1-RR; 1:3000; incubated at room temperature for 1.5 hours) with sh-Control and sh-c-Met (Cytoplasmic) transfected HepG2 cells.



HEK-293 cells were subjected to SDS PAGE followed by western blot with 82904-1-RR (c-Met antibody) at dilution of 1:5000 incubated at room temperature for 1.5 hours.



Bi-layer interferometry (BLI) kinetic assays of 82904-1-RR against Human c-Met (Cytoplasmic) were performed. The affinity constant is 0.573 nM.