

For Research Use Only

CLOCK Recombinant antibody

Catalog Number: 82829-1-RR



Basic Information

Catalog Number: 82829-1-RR	GenBank Accession Number: BC041878	Purification Method: Protein A purification
Size: 100ul , Concentration: 800 µg/ml by Nanodrop;	GeneID (NCBI): 9575	CloneNo.: 1123
Source: Rabbit	Full Name: clock homolog (mouse)	Recommended Dilutions: WB 1:1000-1:8000
Isotype: IgG	Calculated MW: 846 aa, 95 kDa	
Immunogen Catalog Number: AG30011	Observed MW: 110 kDa	

Applications

Tested Applications: WB, ELISA	Positive Controls: WB : HeLa cells, mouse testis tissue, HEK-293 cells, A431 cells, PC-3 cells, NIH/3T3 cells, rat testis tissue
Species Specificity: Human, mouse, rat	

Background Information

Circadian locomotor output cycles protein kaput (CLOCK), also named as BHLHE8 or KIAA0334, is a 846 amino acid protein, which contains one bHLH domain, one PAC domain, and two PAS domains. CLOCK localizes in the nucleus and cytoplasm. CLOCK is expressed in all tissues examined including spleen, thymus, prostate, testis, ovary, small intestine, colon, leukocytes, heart, brain, placenta, lung, liver, skeletal muscle, kidney and pancreas. ARNTL/2-CLOCK heterodimers activate E-box element (5'-CACGTG-3') transcription of a number of proteins of the circadian clock, such as PER1 and PER2. The calculated molecular weight of CLOCK is 95kDa, we detected a 95-110 kDa protein by western blot. Our result is similar to the result of research paper (PMID: 30683868).

Storage

Storage:
Store at -20°C. Stable for one year after shipment.
Storage Buffer:
PBS with 0.02% sodium azide and 50% glycerol pH 7.3.
Aliquoting is unnecessary for -20°C storage

*** 20ul sizes contain 0.1% BSA

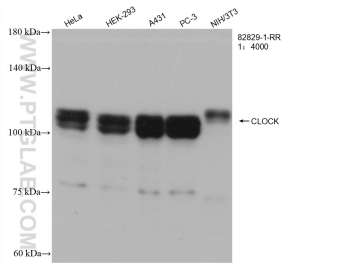
For technical support and original validation data for this product please contact:

T: 1 (888) 4PTGLAB (1-888-478-4522) (toll free in USA), or 1(312) 455-8498 (outside USA)

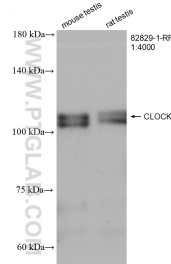
E: proteintech@ptglab.com
W: ptglab.com

This product is exclusively available under Proteintech Group brand and is not available to purchase from any other manufacturer.

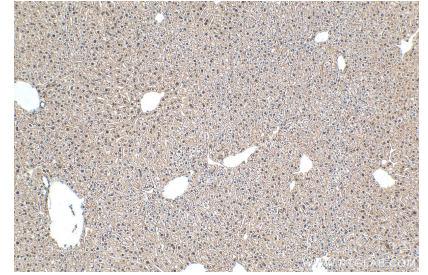
Selected Validation Data



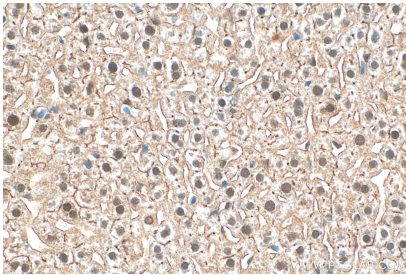
Various lysates were subjected to SDS PAGE followed by western blot with 82829-1-RR (CLOCK antibody) at dilution of 1:4000 incubated at room temperature for 1.5 hours.



Various lysates were subjected to SDS PAGE followed by western blot with 82829-1-RR (CLOCK antibody) at dilution of 1:4000 incubated at room temperature for 1.5 hours.



Immunohistochemical analysis of paraffin-embedded mouse liver tissue slide using 82829-1-RR (CLOCK antibody) at dilution of 1:400 (under 10x lens). Heat mediated antigen retrieval with Tris-EDTA buffer (pH 9.0).



Immunohistochemical analysis of paraffin-embedded mouse liver tissue slide using 82829-1-RR (CLOCK antibody) at dilution of 1:400 (under 40x lens). Heat mediated antigen retrieval with Tris-EDTA buffer (pH 9.0).