

For Research Use Only

CHCHD3 Recombinant antibody

Catalog Number: 82743-1-RR



Basic Information

Catalog Number: 82743-1-RR	GenBank Accession Number: BC014839	Purification Method: Protein A purification
Size: 100ul , Concentration: 500 µg/ml by Nanodrop;	GeneID (NCBI): 54927	CloneNo.: 4B11
Source: Rabbit	Full Name: coiled-coil-helix-coiled-coil-helix domain containing 3	Recommended Dilutions: WB 1:2000-1:10000 IF 1:250-1:1000
Isotype: IgG	Calculated MW: 227 aa, 26 kDa	
Immunogen Catalog Number: AG22579	Observed MW: 26 kDa	

Applications

Tested Applications: IF, WB, ELISA	Positive Controls:
Species Specificity: Human, mouse	WB : HeLa cells, HEK-293 cells, HepG2 cells, Jurkat cells, NIH/3T3 cells, mouse liver tissue
	IF : HepG2 cells,

Background Information

CHCHD3, initially identified as a substrate for cAMP-dependent protein kinase (PKA), is a ubiquitous protein in the mitochondria and plays a prominent role in maintaining cristae integrity and mitochondrial function. In mitochondria, ChChd3 is predominantly localized to the inner membrane (IM), facing toward the intermembrane space (IMS), and is part of the large protein complex now called as MINOS (mitochondrial inner membrane organizing system), or MIB (mitochondrial intermembrane space bridging). CHCHD3 is highly conserved in mammals with human and mouse protein sharing 92% sequence similarity.

Storage

Storage:
Store at -20°C. Stable for one year after shipment.
Storage Buffer:
PBS with 0.02% sodium azide and 50% glycerol pH 7.3.
Aliquoting is unnecessary for -20°C storage

*** 20ul sizes contain 0.1% BSA

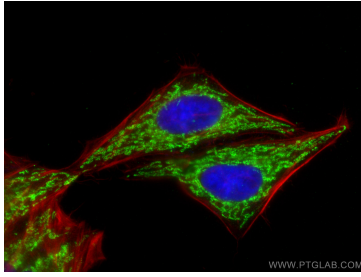
For technical support and original validation data for this product please contact:

T: 1 (888) 4PTGLAB (1-888-478-4522) (toll free in USA), or 1(312) 455-8498 (outside USA)

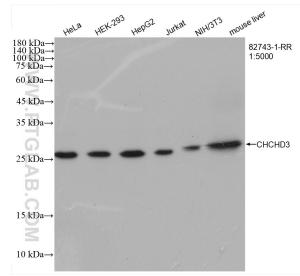
E: proteintech@ptglab.com
W: ptglab.com

This product is exclusively available under Proteintech Group brand and is not available to purchase from any other manufacturer.

Selected Validation Data



Immunofluorescent analysis of (4% PFA) fixed HepG2 cells using CHCHD3 antibody (82743-1-RR, Clone: 4B11) at dilution of 1:500 and CoraLite®488-Conjugated AffiniPure Goat Anti-Rabbit IgG(H+L), CL594-phalloidin (red).



Various lysates were subjected to SDS PAGE followed by western blot with 82743-1-RR (CHCHD3 antibody) at dilution of 1:5000 incubated at room temperature for 1.5 hours.