

For Research Use Only

SERPINE2 Recombinant antibody

Catalog Number: 82732-5-RR



Basic Information

Catalog Number: 82732-5-RR	GenBank Accession Number: BC015663	Purification Method: Protein A purification
Size: 100ul , Concentration: 1000 µg/ml by Nanodrop;	GeneID (NCBI): 5270	CloneNo.: 5016
Source: Rabbit	Full Name: serpin peptidase inhibitor, clade E (nexin, plasminogen activator inhibitor type 1), member 2	Recommended Dilutions: WB 1:2000-1:10000
Isotype: IgG	Calculated MW: 44 kDa	
Immunogen Catalog Number: AG1830	Observed MW: 44-50 kDa	

Applications

Tested Applications:
WB, ELISA

Species Specificity:
Human, mouse, rat

Positive Controls:

WB : U-87 MG cells, C6 cells, U-251 cells, mouse brain tissue, rat brain tissue

Background Information

SERPINE2 also called protease nexin-1 or glial-derived neurite promoting factor, is a member of the serine protease inhibitor (SERPIN) superfamily. It would be a potent inhibitor of the urokinase-plasminogen activator (uPA), tissue-type PA (tPA), thrombin, trypsin, factor Xia, and prostaticin. SERPINE2 is widely expressed in various tissues, including endothelial cells, fibroblasts, smooth muscle cells, tumor cells, glial cells, neurons, and placental cells.

Storage

Storage:
Store at -20°C. Stable for one year after shipment.

Storage Buffer:
PBS with 0.02% sodium azide and 50% glycerol pH 7.3.

Aliquoting is unnecessary for -20°C storage

*** 20ul sizes contain 0.1% BSA

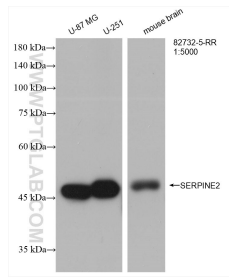
For technical support and original validation data for this product please contact:

T: 1 (888) 4PTGLAB (1-888-478-4522) (toll free
in USA), or 1(312) 455-8498 (outside USA)

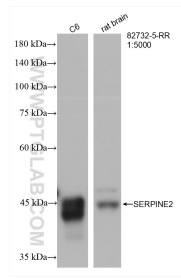
E: proteintech@ptglab.com
W: ptglab.com

This product is exclusively available under Proteintech Group brand and is not available to purchase from any other manufacturer.

Selected Validation Data



Various lysates were subjected to SDS PAGE followed by western blot with 82732-5-RR (SERPINE2 antibody) at dilution of 1:5000 incubated at room temperature for 1.5 hours.



Various lysates were subjected to SDS PAGE followed by western blot with 82732-5-RR (SERPINE2 antibody) at dilution of 1:5000 incubated at room temperature for 1.5 hours.