

For Research Use Only

# MCL1 Recombinant antibody

Catalog Number: 82695-2-RR



## Basic Information

<b>Catalog Number:</b> 82695-2-RR	<b>GenBank Accession Number:</b> BC107735	<b>Purification Method:</b> Protein A purification
<b>Size:</b> 100ul , Concentration: 1000 µg/ml by Nanodrop;	<b>GeneID (NCBI):</b> 4170	<b>CloneNo.:</b> 1C7
<b>Source:</b> Rabbit	<b>UNIPROT ID:</b> Q07820	<b>Recommended Dilutions:</b> WB 1:2000-1:10000 IF 1:50-1:500
<b>Isotype:</b> IgG	<b>Full Name:</b> myeloid cell leukemia sequence 1 (BCL2-related)	
<b>Immunogen Catalog Number:</b> AG10397	<b>Calculated MW:</b> 350 aa, 37 kDa	
	<b>Observed MW:</b> 40 kDa	

## Applications

**Tested Applications:**  
WB, IF, ELISA

**Species Specificity:**  
Human, mouse, rat

### Positive Controls:

**WB :** HeLa cells, HEK-293 cells, MCF-7 cells, Jurkat cells, Raji cells, C2C12 cells, C6 cells

**IF :** MCF-7 cells,

## Background Information

MCL-1 is an anti-apoptotic member of the Bcl-2 family originally isolated from the ML-1 human myeloid leukemia cell line. Similar to BCL2 and BCL2L1, MCL1 can interact with BAX and/or BAK1 to inhibit mitochondria-mediated apoptosis. Mcl-1 is critical for the proliferation and survival of myeloma cells in vitro, and overexpression of Mcl-1 protein in myeloma cells is associated with relapse and short event-free survival in multiple myeloma patients. Recent studies show that MCL-1 is upregulated in numerous haematological and solid tumour malignancies. Therefore, MCL-1 has been suggested as a potential new therapeutic target. MCL-1 can be alternatively spliced into a long form (MCL-1L, 40 kDa) or a short form (MCL-1S, 30 kDa). (PMID: 15467463, PMID: 15147382)

## Storage

**Storage:**  
Store at -20°C. Stable for one year after shipment.

**Storage Buffer:**  
PBS with 0.02% sodium azide and 50% glycerol pH 7.3.

Aliquoting is unnecessary for -20°C storage

\*\*\* 20ul sizes contain 0.1% BSA

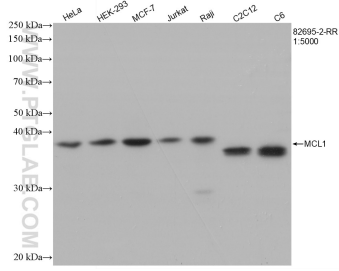
For technical support and original validation data for this product please contact:

T: 1 (888) 4PTGLAB (1-888-478-4522) (toll free in USA), or 1(312) 455-8498 (outside USA)

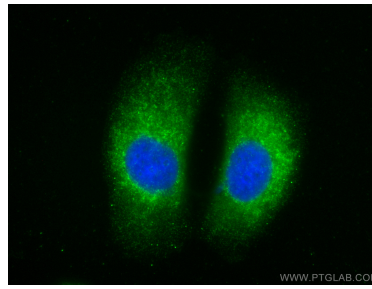
E: [proteintech@ptglab.com](mailto:proteintech@ptglab.com)  
W: [ptglab.com](http://ptglab.com)

This product is exclusively available under Proteintech Group brand and is not available to purchase from any other manufacturer.

## Selected Validation Data



Various lysates were subjected to SDS PAGE followed by western blot with 82695-2-RR (MCL1 antibody) at dilution of 1:5000 incubated at room temperature for 1.5 hours.



Immunofluorescent analysis of (-20°C Methanol) fixed MCF-7 cells using MCL1 antibody (82695-2-RR, Clone: 1C7) at dilution of 1:200 and CoraLite®488-Conjugated AffiniPure Goat Anti-Rabbit IgG(H+L).