

For Research Use Only

# SREBF1 Recombinant antibody

Catalog Number: 82684-3-RR



## Basic Information

<b>Catalog Number:</b> 82684-3-RR	<b>GenBank Accession Number:</b> BC063281	<b>Purification Method:</b> Protein A purification
<b>Size:</b> 100ul , Concentration: 800 µg/ml by Nanodrop;	<b>GeneID (NCBI):</b> 6720	<b>CloneNo.:</b> 1P4
<b>Source:</b> Rabbit	<b>UNIPROT ID:</b> P36956	<b>Recommended Dilutions:</b> WB 1:1000-1:8000
<b>Isotype:</b> IgG	<b>Full Name:</b> sterol regulatory element binding transcription factor 1	
<b>Immunogen Catalog Number:</b> AG5219	<b>Calculated MW:</b> 1177 aa, 125 kDa	
	<b>Observed MW:</b> 68 kDa, 125 kDa	

## Applications

<b>Tested Applications:</b> WB, ELISA	<b>Positive Controls:</b> WB : HeLa cells, A549 cells, MCF-7 cells, K-562 cells
<b>Species Specificity:</b> Human	

## Background Information

SREBF1, also named as BHLHD1 and SREBP1, contains one basic helix-loop-helix (bHLH) domain and belongs to the SREBP family. It is a transcriptional activator required for lipid homeostasis. The SREBPs are synthesized as precursors anchored to endoplasmic reticulum (ER) membranes and complexed with SCAP. When the cellular cholesterol level is low, SREBP-SCAP complexes move to the Golgi apparatus, where SREBPs undergo a two-step proteolytic processing, leading to the release of the mature form, an N-terminal fragment, i.e., basic helix-loop-helix leucine zipper transcription factor. These factors enter the nucleus where they bind to sterol regulatory elements (SRE) in the promoter regions of a number of genes whose products mediate the synthesis of cholesterol and fatty acids. [PMID: 21698267].

## Storage

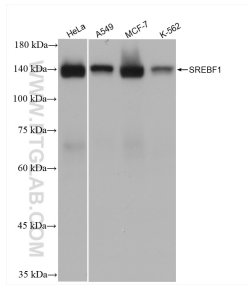
**Storage:**  
Store at -20°C. Stable for one year after shipment.  
**Storage Buffer:**  
PBS with 0.02% sodium azide and 50% glycerol pH 7.3.  
Aliquoting is unnecessary for -20°C storage

\*\*\* 20ul sizes contain 0.1% BSA

For technical support and original validation data for this product please contact:  
T: 1 (888) 4PTGLAB (1-888-478-4522) (toll free in USA), or 1(312) 455-8498 (outside USA)  
E: proteintech@ptglab.com  
W: ptglab.com

This product is exclusively available under Proteintech Group brand and is not available to purchase from any other manufacturer.

## Selected Validation Data



HeLa cells were subjected to SDS PAGE followed by western blot with 82684-3-RR (SREBF 1 antibody) at dilution of 1:4000 incubated at room temperature for 1.5 hours.