

For Research Use Only

# Galectin 3 Recombinant antibody

Catalog Number: 82024-1-RR **1 Publications**



## Basic Information

<b>Catalog Number:</b> 82024-1-RR	<b>GenBank Accession Number:</b> BC001120	<b>Purification Method:</b> Protein A purification
<b>Size:</b> 100ul , Concentration: 500 µg/ml by Nanodrop;	<b>GeneID (NCBI):</b> 3958	<b>CloneNo.:</b> 4M10
<b>Source:</b> Rabbit	<b>UNIPROT ID:</b> P17931	<b>Recommended Dilutions:</b> WB 1:5000-1:50000
<b>Isotype:</b> IgG	<b>Full Name:</b> lectin, galactoside-binding, soluble, 3	IP 0.5-4.0 ug for 1.0-3.0 mg of total protein lysate
<b>Immunogen Catalog Number:</b> AG6891	<b>Calculated MW:</b> 26 kDa	IHC 1:250-1:1000
	<b>Observed MW:</b> 31 kDa	IF 1:250-1:1000

## Applications

<b>Tested Applications:</b> WB, IP, IF, IHC, ELISA	<b>Positive Controls:</b> WB : HeLa cells, MCF-7 cells, A549 cells, A431 cells, NIH/3T3 cells
<b>Cited Applications:</b> IHC	IP : MCF-7 cells,
<b>Species Specificity:</b> Human, mouse	IHC : human thyroid cancer tissue,
<b>Cited Species:</b> human	IF : HeLa cells,

**Note-IHC: suggested antigen retrieval with TE buffer pH 9.0; (\*) Alternatively, antigen retrieval may be performed with citrate buffer pH 6.0**

## Background Information

Galectins are a family of animal lectins defined by shared characteristic amino-acid sequences and affinity for  $\beta$ -galactose-containing oligosaccharides (PMID: 8063692). Galectin-3, a member of the  $\beta$ -galactoside-binding proteins, contains one carbohydrate recognition domain (CRD) and a proline- and glycine-rich N-terminal domain through which is able to form oligomers (PMID: 14758078). Galectin-3 is widely expressed in many normal tissues and a variety of tumors. It is found intracellularly in nucleus and cytoplasm or secreted outside of cell, being present on the cell surface or in the extracellular space (PMID: 16478649). Galectin-3 is involved in various biological processes including cell growth, adhesion, differentiation, apoptosis, angiogenesis, immune response, neoplastic transformation and metastasis (PMID: 16478649; 14758078).

## Notable Publications

Author	Pubmed ID	Journal	Application
Miwa Tanaka	37212282	JCI Insight	IHC

## Storage

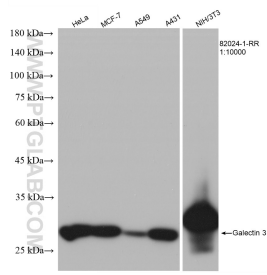
**Storage:**  
Store at -20°C. Stable for one year after shipment.  
**Storage Buffer:**  
PBS with 0.02% sodium azide and 50% glycerol pH 7.3.  
Aliquoting is unnecessary for -20°C storage

\*\*\* 20ul sizes contain 0.1% BSA

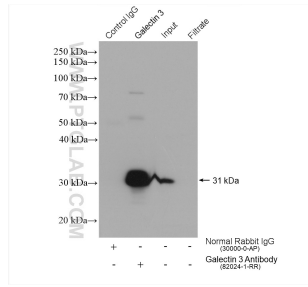
For technical support and original validation data for this product please contact:  
T: 1 (888) 4PTGLAB (1-888-478-4522) (toll free in USA), or 1(312) 455-8498 (outside USA)  
E: proteintech@ptglab.com  
W: ptglab.com

This product is exclusively available under Proteintech Group brand and is not available to purchase from any other manufacturer.

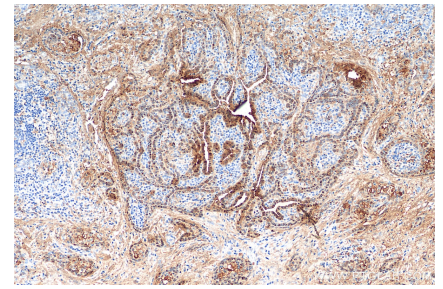
## Selected Validation Data



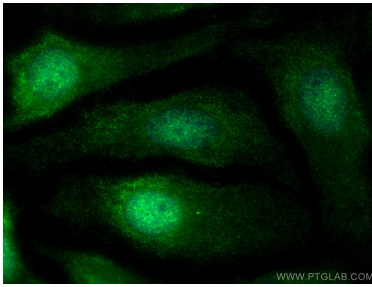
Various lysates were subjected to SDS PAGE followed by western blot with 82024-1-RR (Galectin 3 antibody) at dilution of 1:9900 incubated at room temperature for 1.5 hours.



IP result of anti-Galectin 3 (IP:82024-1-RR, 4ug; Detection:82024-1-RR 1:10000) with MCF-7 cells lysate 1880 ug.



Immunohistochemical analysis of paraffin-embedded human thyroid cancer tissue slide using 82024-1-RR (Galectin 3 antibody) at dilution of 1:500 (under 10x lens). Heat mediated antigen retrieval with Tris-EDTA buffer (pH 9.0).



Immunofluorescent analysis of (-20°C Methanol) fixed HeLa cells using Galectin 3 antibody (82024-1-RR, Clone: 4M10) at dilution of 1:500 and CoraLite®488-Conjugated AffiniPure Goat Anti-Rabbit IgG(H+L).