

For Research Use Only

# LDHB Recombinant antibody

Catalog Number: 81963-1-RR



## Basic Information

<b>Catalog Number:</b> 81963-1-RR	<b>GenBank Accession Number:</b> BC002362	<b>Purification Method:</b> Protein A purification
<b>Size:</b> 100ul , Concentration: 500 µg/ml by Nanodrop;	<b>GeneID (NCBI):</b> 3945	<b>CloneNo.:</b> 1M20
<b>Source:</b> Rabbit	<b>Full Name:</b> lactate dehydrogenase B	<b>Recommended Dilutions:</b> WB 1:20000-1:100000 IP 0.5-4.0 ug for IP and 1:20000-1:100000 for WB IF 1:500-1:2000
<b>Isotype:</b> IgG	<b>Calculated MW:</b> 36 kDa	
<b>Immunogen Catalog Number:</b> AG6605	<b>Observed MW:</b> 35 kDa	

## Applications

<b>Tested Applications:</b> FC, IF, IP, WB, ELISA	<b>Positive Controls:</b>
<b>Species Specificity:</b> Human, mouse, rat	<b>WB :</b> HeLa cells, HEK-293 cells, DU 145 cells, rat heart tissue, mouse brain tissue, rat brain tissue
	<b>IP :</b> HeLa cells,
	<b>IF :</b> HeLa cells,

## Background Information

LDHB, also named as LDH-H and NY-REN-46, belongs to the LDH/MDH superfamily. And LDH family. It is an enzyme which catalyzes the reversible conversion of pyruvate and NADH to lactate and NAD<sup>+</sup> in the glycolytic pathway. LDH comprises LDHA and LDHB, two subunits that are encoded by independent genes. In muscle or liver, most of the LDH is composed of four LDHA subunits, and preferably catalyzes the reduction of pyruvate to lactate. In heart and brain, LDH is mainly composed of four LDHB subunits, and predominantly catalyzes the oxidation of lactate to pyruvate. In other tissues, LDH is composed of both LDHA and LDHB. (PMID: 26269128, 31804482)

## Storage

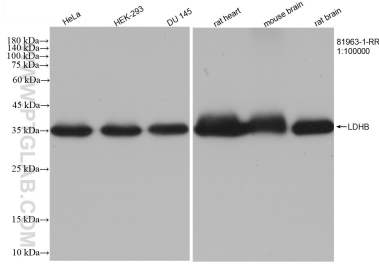
**Storage:**  
Store at -20°C. Stable for one year after shipment.  
**Storage Buffer:**  
PBS with 0.02% sodium azide and 50% glycerol pH 7.3.  
Aliquoting is unnecessary for -20°C storage

\*\*\* 20ul sizes contain 0.1% BSA

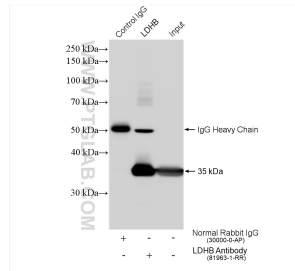
For technical support and original validation data for this product please contact:  
T: 1 (888) 4PTGLAB (1-888-478-4522) (toll free in USA), or 1(312) 455-8498 (outside USA)  
E: proteintech@ptglab.com  
W: ptglab.com

This product is exclusively available under Proteintech Group brand and is not available to purchase from any other manufacturer.

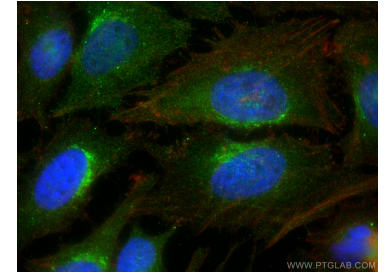
## Selected Validation Data



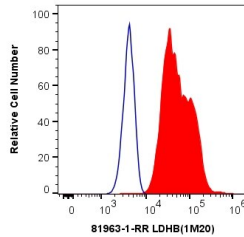
Various lysates were subjected to SDS PAGE followed by western blot with 81963-1-RR (LDHB antibody) at dilution of 1:100000 incubated at room temperature for 1.5 hours.



IP result of anti-LDHB(IP:81963-1-RR, 4ug; Detection:81963-1-RR 1:50000) with HeLa cells lysate 2000 ug.



Immunofluorescent analysis of (4% PFA) fixed HeLa cells using LDHB antibody (81963-1-RR, Clone: 1M20) at dilution of 1:1000 and CoraLite®488-Conjugated AffiniPure Goat Anti-Rabbit IgG(H+L), CL594-Phalloidin (red).



$1 \times 10^6$  HeLa cells were intracellularly stained with 0.4 ug Anti-Human LDHB (81963-1-RR, Clone:1M20) and CoraLite®488-Conjugated AffiniPure Goat Anti-Rabbit IgG(H+L) at dilution 1:1000 (red), or 0.4 ug Isotype Control. Cells were fixed with 4% PFA and permeabilized with Flow Cytometry Perm Buffer (PF00011-C).