

For Research Use Only

# OPN, SPP1 Recombinant antibody

Catalog Number: 80912-4-RR



## Basic Information

<b>Catalog Number:</b> 80912-4-RR	<b>GenBank Accession Number:</b> BC007016	<b>Purification Method:</b> Protein A purification
<b>Size:</b> 100ul , Concentration: 1000 µg/ml by Nanodrop;	<b>GeneID (NCBI):</b> 6696	<b>CloneNo.:</b> 6B11
<b>Source:</b> Rabbit	<b>Full Name:</b> secreted phosphoprotein 1	<b>Recommended Dilutions:</b> WB 1:2000-1:12800
<b>Isotype:</b> IgG	<b>Calculated MW:</b> 314 aa, 35 kDa	
<b>Immunogen Catalog Number:</b> AG19216	<b>Observed MW:</b> 70 kDa, 44-66 kDa	

## Applications

<b>Tested Applications:</b> WB, ELISA	<b>Positive Controls:</b> WB : HEK-293 cells, HepG2 cells, C2C12 cells, mouse kidney tissue, rat kidney tissue
<b>Species Specificity:</b> Human, rat, mouse	

## Background Information

Osteopontin (OPN), also known as SPP1, is a secreted glycoprophosphoprotein that belongs to the small integrin-binding ligand N-linked glycoprotein (SIBLING) family. Originally isolated from bone, OPN has been found in kidneys, vascular tissues, biological fluids, and various tumor tissues (PMID: 15138464; 16406521). OPN can interact with CD44 and integrins and regulate diverse biological processes. It has a multifaceted role in bone development and remodeling, and is also involved in the inflammatory and immune response, oncogenesis and cancer progression. The very acidic nature of OPN, as well as the presence of variable posttranslational modifications, has led to anomalous migration in SDS-polyacrylamide gels and therefore to reports of different molecular weights for OPN (PMID: 8293561). Depending on the cell and tissue source and/or the SDS-PAGE system, OPN migrates with a molecular weight of 44-80 kDa, as well as at some smaller bands corresponding to peptide fragments (PMID: 8195113; 17890765).

## Storage

**Storage:**  
Store at -20°C. Stable for one year after shipment.  
**Storage Buffer:**  
PBS with 0.02% sodium azide and 50% glycerol pH 7.3.  
Aliquoting is unnecessary for -20°C storage

\*\*\* 20ul sizes contain 0.1% BSA

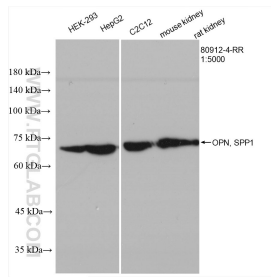
For technical support and original validation data for this product please contact:

T: 1 (888) 4PTGLAB (1-888-478-4522) (toll free  
in USA), or 1(312) 455-8498 (outside USA)

E: [proteintech@ptglab.com](mailto:proteintech@ptglab.com)  
W: [ptglab.com](http://ptglab.com)

This product is exclusively available under Proteintech Group brand and is not available to purchase from any other manufacturer.

## Selected Validation Data



Various lysates were subjected to SDS PAGE followed by western blot with 80912-4-RR (OPN, SPP1 antibody) at dilution of 1:5000 incubated at room temperature for 1.5 hours.