

For Research Use Only

METTL14 Recombinant antibody

Catalog Number: 80790-1-RR

Featured Product

1 Publications



Basic Information

Catalog Number: 80790-1-RR	GenBank Accession Number: BC007449	Purification Method: Protein A purification
Size: 100ul , Concentration: 1000 µg/ml by Nanodrop;	GeneID (NCBI): 57721	CloneNo.: 2E7
Source: Rabbit	Full Name: methyltransferase like 14	Recommended Dilutions: WB 1:2000-1:14000 IHC 1:1000-1:4000
Isotype: IgG	Calculated MW: 456 aa, 52 kDa	
Immunogen Catalog Number: AG14325	Observed MW: 55-60 kDa	

Applications

Tested Applications:

IHC, WB, ELISA

Cited Applications:

IHC, WB

Species Specificity:

Human, Mouse

Cited Species:

human

Note-IHC: suggested antigen retrieval with TE buffer pH 9.0; (*) Alternatively, antigen retrieval may be performed with citrate buffer pH 6.0

Positive Controls:

WB : LNCaP cells, HeLa cells, NCCIT cells, HEK-293 cells, HepG2 cells, Jurkat cells, K-562 cells, HSC-T6 cells, NIH/3T3 cells

IHC : human colon cancer tissue,

Background Information

METTL14, is also named as Methyltransferase-like protein 14 or KIAA1627, is a 456 amino acid protein, which belongs to the MT-A70-like family and localized in the nucleus. The METTL3-METTL14 heterodimer forms a N6-methyltransferase complex that methylates adenosine residues of some mRNAs and regulates the circadian clock and differentiation of embryonic stem cells. N6-methyladenosine (m6A), which takes place at the 5'-[AG]GAC-3' consensus sites of some mRNAs, plays a role in the efficiency of mRNA splicing, processing and mRNA stability. M6A regulates the length of the circadian clock: acts as a early pace-setter in the circadian loop. M6A also acts as a regulator of mRNA stability: in embryonic stem cells (ESCs), m6A methylation of mRNAs encoding key naïve pluripotency-promoting transcripts results in transcript destabilization.

Notable Publications

Author	Pubmed ID	Journal	Application
Kangjie Wang	36482903	Front Genet	WB,IHC

Storage

Storage:

Store at -20°C.

Storage Buffer:

PBS with 0.02% sodium azide and 50% glycerol pH 7.3.

Aliquoting is unnecessary for -20°C storage

*** 20ul sizes contain 0.1% BSA

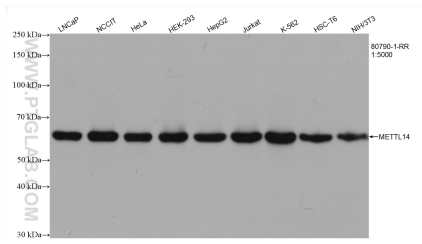
For technical support and original validation data for this product please contact:

T: 1 (888) 4PTGLAB (1-888-478-4522) (toll free in USA), or 1(312) 455-8498 (outside USA)

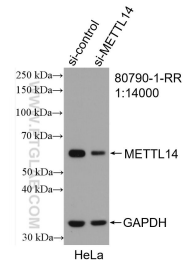
E: proteintech@ptglab.com
W: ptglab.com

This product is exclusively available under Proteintech Group brand and is not available to purchase from any other manufacturer.

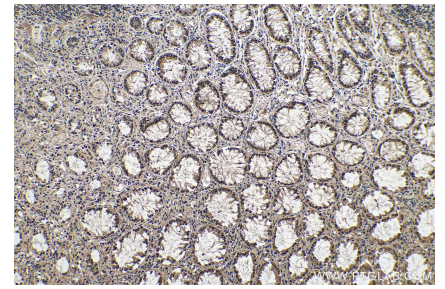
Selected Validation Data



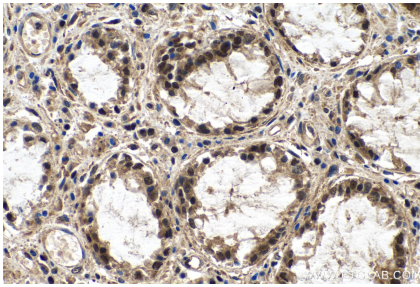
Various lysates were subjected to SDS PAGE followed by western blot with 80790-1-RR (METTL14 antibody) at dilution of 1:5000 incubated at room temperature for 1.5 hours.



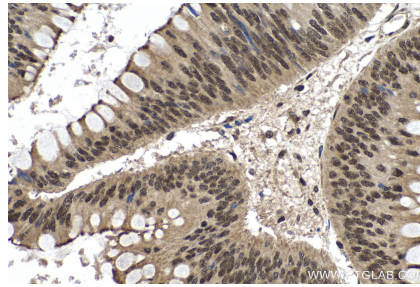
WB result of METTL14 antibody (80790-1-RR; 1:14000; incubated at room temperature for 1.5 hours) with sh-Control and sh-METTL14 transfected HeLa cells.



Immunohistochemical analysis of paraffin-embedded human colon cancer tissue slide using 80790-1-RR (METTL14 antibody) at dilution of 1:2000 (under 10x lens). Heat mediated antigen retrieval with Tris-EDTA buffer (pH 9.0).



Immunohistochemical analysis of paraffin-embedded human colon cancer tissue slide using 80790-1-RR (METTL14 antibody) at dilution of 1:2000 (under 40x lens). Heat mediated antigen retrieval with Tris-EDTA buffer (pH 9.0).



Immunohistochemical analysis of paraffin-embedded human colon cancer tissue slide using 80790-1-RR (METTL14 antibody) at dilution of 1:2000 (under 40x lens). Heat mediated antigen retrieval with Tris-EDTA buffer (pH 9.0).