

For Research Use Only

CYP46A1 Monoclonal antibody

Catalog Number: 68576-1-Ig



Basic Information

| | | |
|---|--|---------------------------------------|
| Catalog Number: | GenBank Accession Number: | Purification Method: |
| 68576-1-Ig | BC022539 | Protein A purification |
| Size: | GeneID (NCBI): | CloneNo.: |
| 150ul, Concentration: 1000 µg/ml by Nanodrop; | 10858 | 1E10D3 |
| Source: | Full Name: | Recommended Dilutions: |
| Mouse | cytochrome P450, family 46, subfamily A, polypeptide 1 | WB 1:5000-1:20000 IHC 1:250-1:1000 |
| Isotype: | Calculated MW: | |
| IgG2b | 500 aa, 57 kDa | |
| Immunogen Catalog Number: | Observed MW: | |
| AG16786 | 57 kDa | |

Applications

Tested Applications:

IHC, WB, ELISA

Species Specificity:

Human, Mouse, Rat, Rabbit, Pig

Note-IHC: suggested antigen retrieval with TE buffer pH 9.0; (*) Alternatively, antigen retrieval may be performed with citrate buffer pH 6.0

Positive Controls:

WB : human brain tissue, pig brain tissue, rabbit brain tissue, rat brain tissue, mouse brain tissue

IHC : mouse brain tissue,

Background Information

Cytochrome P450 46A1 (CYP46A1), also named as CYP46, P450 46A1, CH24H and Cholesterol 24-hydroxylase, belongs to the cytochrome P450 family. CYP46A1 is a central nervous system-specific enzyme, and can freely cross the blood-brain barrier and be degraded in the liver. It is involved in the turnover of cholesterol. It converts cholesterol into 24S-hydroxycholesterol and, to a lesser extent, 25-hydroxycholesterol. CYP46A1 is significantly upregulated in hepatic lymphomyeloid cells compared with ESCs.(PMID:20039312)

Storage

Storage:

Store at -20°C. Stable for one year after shipment.

Storage Buffer:

PBS with 0.02% sodium azide and 50% glycerol pH 7.3.

Aliquoting is unnecessary for -20°C storage

*** 20ul sizes contain 0.1% BSA

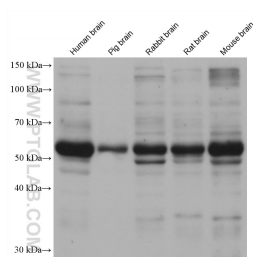
For technical support and original validation data for this product please contact:

T: 1 (888) 4PTGLAB (1-888-478-4522) (toll free in USA), or 1(312) 455-8498 (outside USA)

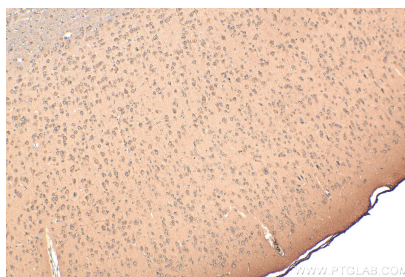
E: proteintech@ptglab.com
W: ptglab.com

This product is exclusively available under Proteintech Group brand and is not available to purchase from any other manufacturer.

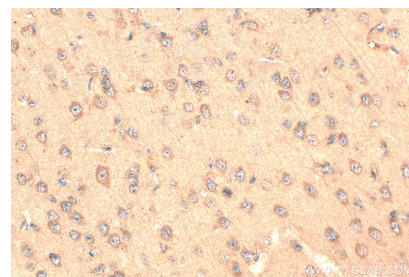
Selected Validation Data



Various lysates were subjected to SDS PAGE followed by western blot with 68576-1-Ig (CYP46A1 antibody) at dilution of 1:10000 incubated at room temperature for 1.5 hours.



Immunohistochemical analysis of paraffin-embedded mouse brain tissue slide using 68576-1-Ig (CYP46A1 antibody) at dilution of 1:500 (under 10x lens). Heat mediated antigen retrieval with Tris-EDTA buffer (pH 9.0).



Immunohistochemical analysis of paraffin-embedded mouse brain tissue slide using 68576-1-Ig (CYP46A1 antibody) at dilution of 1:500 (under 40x lens). Heat mediated antigen retrieval with Tris-EDTA buffer (pH 9.0).