

For Research Use Only

MRPL24 Monoclonal antibody

Catalog Number: 68556-1-Ig



Basic Information

Catalog Number: 68556-1-Ig	GenBank Accession Number: BC016700	Purification Method: Protein G purification
Size: 150ul , Concentration: 1000 µg/ml by Nanodrop;	GeneID (NCBI): 79590	CloneNo.: 3D3C8
Source: Mouse	Full Name: mitochondrial ribosomal protein L24	Recommended Dilutions: WB 1:5000-1:50000
Isotype: IgG1	Calculated MW: 216 aa, 25 kDa	
Immunogen Catalog Number: AG9576	Observed MW: 25-28 kDa	

Applications

Tested Applications:
WB, ELISA

Species Specificity:
Human

Positive Controls:

WB : HepG2 cells, A431 cells, HT-29 cells, LNCaP cells, HeLa cells, HEK-293 cells, Jurkat cells, K-562 cells, Raji cells

Background Information

Storage

Storage:
Store at -20°C. Stable for one year after shipment.

Storage Buffer:
PBS with 0.02% sodium azide and 50% glycerol pH 7.3.

Aliquoting is unnecessary for -20°C storage

***** 20ul sizes contain 0.1% BSA**

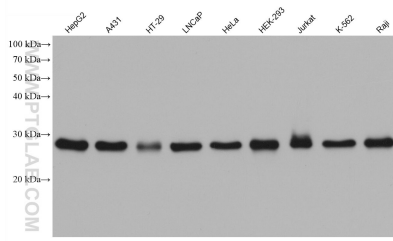
For technical support and original validation data for this product please contact:

T: 1 (888) 4PTGLAB (1-888-478-4522) (toll free in USA), or 1(312) 455-8498 (outside USA)

E: proteintech@ptglab.com
W: ptglab.com

This product is exclusively available under Proteintech Group brand and is not available to purchase from any other manufacturer.

Selected Validation Data



Various lysates were subjected to SDS PAGE followed by western blot with 68556-1-Ig (MRPL24 antibody) at dilution of 1:10000 incubated at room temperature for 1.5 hours.