

For Research Use Only

# SUCLA2 Monoclonal antibody

Catalog Number: 68549-1-Ig



## Basic Information

<b>Catalog Number:</b> 68549-1-Ig	<b>GenBank Accession Number:</b> BC027587	<b>Purification Method:</b> Protein A purification
<b>Size:</b> 150ul, Concentration: 1000 µg/ml by Nanodrop;	<b>GeneID (NCBI):</b> 8803	<b>CloneNo.:</b> 2C7E4
<b>Source:</b> Mouse	<b>Full Name:</b> succinate-CoA ligase, ADP-forming, beta subunit	<b>Recommended Dilutions:</b> WB 1:2000-1:16000
<b>Isotype:</b> IgG2b	<b>Calculated MW:</b> 463 aa, 50 kDa	
<b>Immunogen Catalog Number:</b> AG17967	<b>Observed MW:</b> 48-50 kDa	

## Applications

**Tested Applications:**  
WB, ELISA

**Species Specificity:**  
Human, mouse

**Positive Controls:**  
WB : HepG2 cells, LNCaP cells, HeLa cells, Jurkat cells,  
K-562 cells, mouse brain tissue

## Background Information

SUCLA2,  $\beta$  subunit of succinate-CoA ligase, contributes to energy production in mitochondria through the succinate-CoA ligase enzyme. Succinate-CoA ligase catalyses the reversible conversion of succinyl-CoA and ADP or GDP to succinate and ATP or GTP. SUCLA2 mutations cause global protein succinylation and mitochondrial DNA depletion (PMID: 33230181, PMID: 20301762). Mutations in SUCLA2 are also associated with SUCLA2-related mitochondrial DNA depletion syndrome, Leigh syndrome, down syndrome (PMID: 23010432).

## Storage

**Storage:**  
Store at -20°C. Stable for one year after shipment.

**Storage Buffer:**  
PBS with 0.02% sodium azide and 50% glycerol pH 7.3.

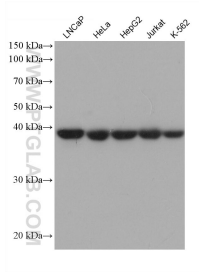
Aliquoting is unnecessary for -20°C storage

\*\*\* 20ul sizes contain 0.1% BSA

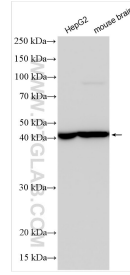
For technical support and original validation data for this product please contact:  
T: 1 (888) 4PTGLAB (1-888-478-4522) (toll free in USA), or 1(312) 455-8498 (outside USA)  
E: proteintech@ptglab.com  
W: ptglab.com

This product is exclusively available under Proteintech Group brand and is not available to purchase from any other manufacturer.

## Selected Validation Data



Various lysates were subjected to SDS PAGE followed by western blot with 68549-1-Ig (SUCLA2 antibody) at dilution of 1:9900 incubated at room temperature for 1.5 hours.



Various lysates were subjected to SDS PAGE followed by western blot with 68549-1-Ig (SUCLA2 antibody) at dilution of 1:8000 incubated at room temperature for 1.5 hours.