

For Research Use Only

IKBKE Monoclonal antibody

Catalog Number: 68531-1-Ig



Basic Information

| | | |
|--|--|---|
| Catalog Number: 68531-1-Ig | GenBank Accession Number: BC107812 | Purification Method: Protein G purification |
| Size: 150ul , Concentration: 1000 µg/ml by Nanodrop; | GeneID (NCBI): 9641 | CloneNo.: 3E4H7 |
| Source: Mouse | Full Name: inhibitor of kappa light polypeptide gene enhancer in B-cells, kinase epsilon | Recommended Dilutions: WB 1:5000-1:50000 |
| Isotype: IgG1 | Calculated MW: 716 aa, 80 kDa | |
| Immunogen Catalog Number: AG30374 | Observed MW: 80 kDa | |

Applications

Tested Applications:

WB, ELISA

Species Specificity:

Human

Positive Controls:

WB : SK-BR-3 cells, Jurkat cells, MCF-7 cells, HeLa cells, Raji cells, Ramos cells, Daudi cells, HL-60 cells, THP-1 cells

Background Information

IKBKE is a serine/threonine kinase that plays an essential role in regulating inflammatory responses to viral infection, through the activation of the type I IFN, NF-kappa-B and STAT signaling. It is also involved in TNFA and inflammatory cytokines, like Interleukin-1, signaling.

Storage

Storage:

Store at -20°C. Stable for one year after shipment.

Storage Buffer:

PBS with 0.02% sodium azide and 50% glycerol pH 7.3.

Aliquoting is unnecessary for -20°C storage

*** 20ul sizes contain 0.1% BSA

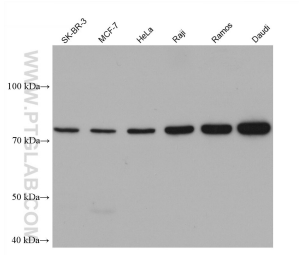
For technical support and original validation data for this product please contact:

T: 1 (888) 4PTGLAB (1-888-478-4522) (toll free in USA), or 1(312) 455-8498 (outside USA)

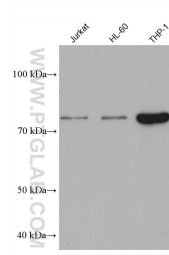
E: proteintech@ptglab.com
W: ptglab.com

This product is exclusively available under Proteintech Group brand and is not available to purchase from any other manufacturer.

Selected Validation Data



Various lysates were subjected to SDS PAGE followed by western blot with 68531-1-Ig (IKBKE antibody) at dilution of 1:10000 incubated at room temperature for 1.5 hours.



Various lysates were subjected to SDS PAGE followed by western blot with 68531-1-Ig (IKBKE antibody) at dilution of 1:10000 incubated at room temperature for 1.5 hours.