

For Research Use Only

# ATL3 Monoclonal antibody

Catalog Number: 68516-1-Ig



## Basic Information

<b>Catalog Number:</b> 68516-1-Ig	<b>GenBank Accession Number:</b> BC077727	<b>Purification Method:</b> Protein G purification
<b>Size:</b> 150ul , Concentration: 1000 µg/ml by Nanodrop;	<b>GeneID (NCBI):</b> 25923	<b>CloneNo.:</b> 2E7C4
<b>Source:</b> Mouse	<b>Full Name:</b> atlastin GTPase 3	<b>Recommended Dilutions:</b> WB 1:5000-1:50000
<b>Isotype:</b> IgG1	<b>Calculated MW:</b> 541 aa, 61 kDa	
<b>Immunogen Catalog Number:</b> AG10248	<b>Observed MW:</b> 61 kDa	

## Applications

<b>Tested Applications:</b> WB, ELISA	<b>Positive Controls:</b>
<b>Species Specificity:</b> Human, mouse, rat, rabbit	<b>WB :</b> PC-3 cells, HeLa cells, Jurkat cells, K-562 cells, rabbit testis tissue, rat testis tissue, mouse testis tissue

## Background Information

ATL3, belonging to a class of dynamin-like GTPase, was reported to mediate ER fusion. ATL3 is required for the proper formation of the network of interconnected tubules of the endoplasmic reticulum. ATL3 functions as a receptor for ER-phagy, promoting tubular ER degradation upon starvation. Mutations in this gene may be associated with hereditary sensory neuropathy type IF.

## Storage

**Storage:**  
Store at -20°C. Stable for one year after shipment.  
**Storage Buffer:**  
PBS with 0.02% sodium azide and 50% glycerol pH 7.3.  
Aliquoting is unnecessary for -20°C storage

\*\*\* 20ul sizes contain 0.1% BSA

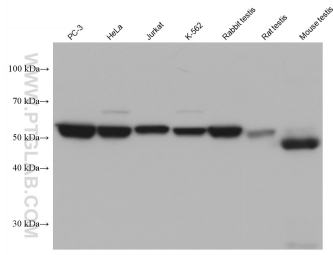
For technical support and original validation data for this product please contact:

T: 1 (888) 4PTGLAB (1-888-478-4522) (toll free  
in USA), or 1(312) 455-8498 (outside USA)

E: [proteintech@ptglab.com](mailto:proteintech@ptglab.com)  
W: [ptglab.com](http://ptglab.com)

This product is exclusively available under Proteintech Group brand and is not available to purchase from any other manufacturer.

## Selected Validation Data



Various lysates were subjected to SDS PAGE followed by western blot with 68516-1-Ig (ATL3 antibody) at dilution of 1:20000 incubated at room temperature for 1.5 hours.