

For Research Use Only

# MEN1 Monoclonal antibody

Catalog Number: 68473-1-Ig



## Basic Information

<b>Catalog Number:</b> 68473-1-Ig	<b>GenBank Accession Number:</b> BC002544	<b>Purification Method:</b> Protein G purification
<b>Size:</b> 150ul , Concentration: 1000 µg/ml by Nanodrop;	<b>GeneID (NCBI):</b> 4221	<b>CloneNo.:</b> 3A6A11
<b>Source:</b> Mouse	<b>Full Name:</b> multiple endocrine neoplasia I	<b>Recommended Dilutions:</b> WB 1:5000-1:50000
<b>Isotype:</b> IgG1	<b>Calculated MW:</b> 68 kDa	
<b>Immunogen Catalog Number:</b> AG7566	<b>Observed MW:</b> 68-70 kDa	

## Applications

<b>Tested Applications:</b> WB, ELISA	<b>Positive Controls:</b> WB : HepG2 cells, HEK-293 cells, HeLa cells, U2OS cells, LNCaP cells, K-562 cells, Jurkat cells
<b>Species Specificity:</b> Human	

## Background Information

MEN1, also named as Menin or MEI1, is a tumor suppressor protein encoded by the MEN1 gene. It is located in nucleus and ubiquitous expression in spleen and lymph node. The calculated molecular weight of MEN1 is 68 kDa. Its inactivation has been implicated in tumors of many endocrine tissues. Germline inactivating mutations of MEN1 gene are the main cause of multiple endocrine neoplasia type 1 (MEN1), a syndrome characterized by tumors in the pituitary gland, the parathyroid glands, and the enteropancreatic neuroendocrine tissues. Recent study shows astroglia menin deficiency leads to depressive-like behaviors in mice.

## Storage

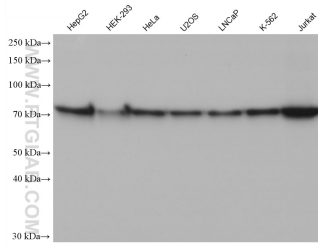
**Storage:**  
Store at -20°C. Stable for one year after shipment.  
**Storage Buffer:**  
PBS with 0.02% sodium azide and 50% glycerol pH 7.3.  
Aliquoting is unnecessary for -20°C storage

\*\*\* 20ul sizes contain 0.1%BSA

For technical support and original validation data for this product please contact:  
T: 1 (888) 4PTGLAB (1-888-478-4522) (toll free in USA), or 1(312) 455-8498 (outside USA)  
E: [proteintech@ptglab.com](mailto:proteintech@ptglab.com)  
W: [ptglab.com](http://ptglab.com)

This product is exclusively available under Proteintech Group brand and is not available to purchase from any other manufacturer.

## Selected Validation Data



Various lysates were subjected to SDS PAGE followed by western blot with 68473-1-Ig (MEN1 antibody) at dilution of 1:20000 incubated at room temperature for 1.5 hours.