

For Research Use Only

CRTAP Monoclonal antibody

Catalog Number: 68458-1-Ig



Basic Information

Catalog Number: 68458-1-Ig	GenBank Accession Number: BC008745	Purification Method: Protein G purification
Size: 150ul , Concentration: 1000 µg/ml by Nanodrop;	GeneID (NCBI): 10491	CloneNo.: 2G1G6
Source: Mouse	Full Name: cartilage associated protein	Recommended Dilutions: WB 1:2000-1:10000
Isotype: IgG1	Calculated MW: 46.5 kDa	
Immunogen Catalog Number: AG8456	Observed MW: 43-47 kDa	

Applications

Tested Applications: WB, ELISA	Positive Controls: WB : HT-1080 cells, HT1080, HT-1376, Saos-2, MDA-MB-231, HeLa, U251
Species Specificity: Human	

Background Information

Storage

Storage:
Store at -20°C. Stable for one year after shipment.
Storage Buffer:
PBS with 0.02% sodium azide and 50% glycerol pH 7.3.
Aliquoting is unnecessary for -20°C storage

*** 20ul sizes contain 0.1% BSA

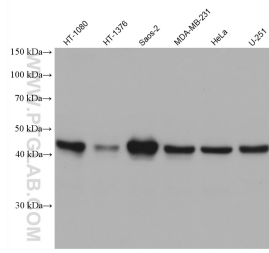
For technical support and original validation data for this product please contact:

T: 1 (888) 4PTGLAB (1-888-478-4522) (toll free
in USA), or 1(312) 455-8498 (outside USA)

E: proteintech@ptglab.com
W: ptglab.com

This product is exclusively available under Proteintech Group brand and is not available to purchase from any other manufacturer.

Selected Validation Data



Various lysates were subjected to SDS PAGE followed by western blot with 68458-1-Ig (CRTAP antibody) at dilution of 1:5000 incubated at room temperature for 1.5 hours.