

For Research Use Only

# MRPL38 Monoclonal antibody

Catalog Number: 68418-1-Ig



## Basic Information

<b>Catalog Number:</b> 68418-1-Ig	<b>GenBank Accession Number:</b> BC013311	<b>Purification Method:</b> Protein G purification
<b>Size:</b> 150ul , Concentration: 1000 µg/ml by Nanodrop;	<b>GeneID (NCBI):</b> 64978	<b>CloneNo.:</b> 1D11A1
<b>Source:</b> Mouse	<b>Full Name:</b> mitochondrial ribosomal protein L38	<b>Recommended Dilutions:</b> WB 1:2000-1:10000
<b>Isotype:</b> IgG1	<b>Calculated MW:</b> 346 aa, 41 kDa	
<b>Immunogen Catalog Number:</b> AG8927	<b>Observed MW:</b> 37-45 kDa	

## Applications

**Tested Applications:**  
WB, ELISA

**Species Specificity:**  
Human, pig

### Positive Controls:

**WB:** A549 cells, pig liver tissue, LNCaP cells, Jurkat cells, K-562 cells

## Background Information

### Storage

**Storage:**  
Store at -20°C. Stable for one year after shipment.

**Storage Buffer:**  
PBS with 0.02% sodium azide and 50% glycerol pH 7.3.

Aliquoting is unnecessary for -20°C storage

\*\*\* 20ul sizes contain 0.1% BSA

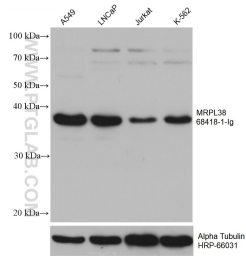
For technical support and original validation data for this product please contact:

T: 1 (888) 4PTGLAB (1-888-478-4522) (toll free  
in USA), or 1(312) 455-8498 (outside USA)

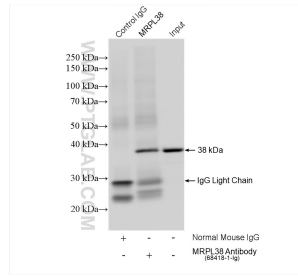
E: [proteintech@ptglab.com](mailto:proteintech@ptglab.com)  
W: [ptglab.com](http://ptglab.com)

This product is exclusively available under Proteintech Group brand and is not available to purchase from any other manufacturer.

## Selected Validation Data



Various lysates were subjected to SDS PAGE followed by western blot with 68418-1-Ig (MRPL38 antibody) at dilution of 1:5000 incubated at room temperature for 1.5 hours. The membrane was stripped and reblotted with HRP-conjugated Alpha Tubulin Monoclonal antibody (HRP-66031) as loading control.



IP result of anti-MRPL38 (IP:68418-1-Ig, 4ug; Detection:68418-1-Ig 1:2000) with A549 cells lysate 920 ug.