

For Research Use Only

# MID2 Monoclonal antibody

Catalog Number: 68359-1-Ig



## Basic Information

<b>Catalog Number:</b> 68359-1-Ig	<b>GenBank Accession Number:</b> BC017707	<b>Purification Method:</b> Protein G purification
<b>Size:</b> 150ul , Concentration: 1000 µg/ml by Nanodrop;	<b>GeneID (NCBI):</b> 11043	<b>CloneNo.:</b> 1F9E4
<b>Source:</b> Mouse	<b>Full Name:</b> midline 2	<b>Recommended Dilutions:</b> WB 1:1000-1:4000
<b>Isotype:</b> IgG1	<b>Calculated MW:</b> 715 aa, 81 kDa	
<b>Immunogen Catalog Number:</b> AG30793	<b>Observed MW:</b> 80-83 kDa	

## Applications

<b>Tested Applications:</b> WB, ELISA	<b>Positive Controls:</b> WB : A549 cells, Jurkat cells, MCF-7 cells, HEK-293 cells
<b>Species Specificity:</b> Human	

## Background Information

Midline2 (MID2) is an ubiquitin-conjugating E2 enzyme that is involved in tumor development and has a physical interaction with breast cancer 1,early-onset (BRCA1).

## Storage

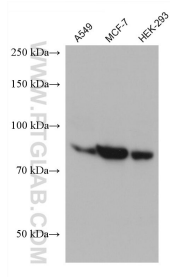
**Storage:**  
Store at -20°C. Stable for one year after shipment.  
**Storage Buffer:**  
PBS with 0.02% sodium azide and 50% glycerol pH 7.3.  
Aliquoting is unnecessary for -20°C storage

\*\*\* 20ul sizes contain 0.1% BSA

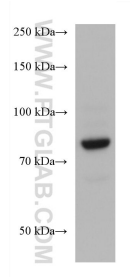
For technical support and original validation data for this product please contact:  
T: 1 (888) 4PTGLAB (1-888-478-4522) (toll free in USA), or 1(312) 455-8498 (outside USA)      E: proteintech@ptglab.com  
W: ptglab.com

This product is exclusively available under Proteintech Group brand and is not available to purchase from any other manufacturer.

## Selected Validation Data



Various lysates were subjected to SDS PAGE followed by western blot with 68359-1-Ig (MID2 antibody) at dilution of 1:2000 incubated at room temperature for 1.5 hours.



Jurkat cells were subjected to SDS PAGE followed by western blot with 68359-1-Ig (MID2 antibody) at dilution of 1:2000 incubated at room temperature for 1.5 hours.