

For Research Use Only

RABL3 Monoclonal antibody

Catalog Number: 68342-1-Ig



Basic Information

Catalog Number: 68342-1-Ig	GenBank Accession Number: BC020832	Purification Method: Protein G purification
Size: 150ul , Concentration: 1000 µg/ml by Nanodrop;	GeneID (NCBI): 285282	CloneNo.: 2H3E1
Source: Mouse	Full Name: RAB, member of RAS oncogene family-like 3	Recommended Dilutions: WB 1:5000-1:50000 IF 1:400-1:1600
Isotype: IgG1	Calculated MW: 236 aa, 26 kDa	
Immunogen Catalog Number: AG33137	Observed MW: 26 kDa	

Applications

Tested Applications:

IF, WB, ELISA

Species Specificity:

human

Positive Controls:

WB : U2OS cells, LNCaP cells, HeLa cells, HEK-293 cells,
Jurkat cells, K-562 cells

IF : A549 cells,

Background Information

The gene of Rabl3 is located on 3q13.3 and is composed of eight exons and seven introns. It is a member of the Rab subfamily, the largest group in the Ras superfamily of small guanosine triphosphatases (GTPases).

Storage

Storage:

Store at -20°C. Stable for one year after shipment.

Storage Buffer:

PBS with 0.02% sodium azide and 50% glycerol pH 7.3.

Aliquoting is unnecessary for -20°C storage

*** 20ul sizes contain 0.1% BSA

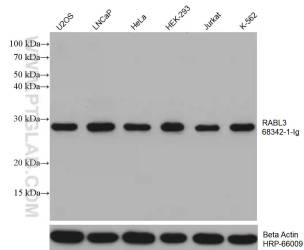
For technical support and original validation data for this product please contact:

T: 1 (888) 4PTGLAB (1-888-478-4522) (toll free
in USA), or 1(312) 455-8498 (outside USA)

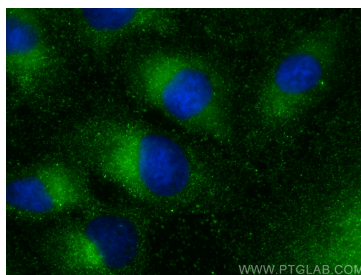
E: proteintech@ptglab.com
W: ptglab.com

This product is exclusively available under Proteintech Group brand and is not available to purchase from any other manufacturer.

Selected Validation Data



Various lysates were subjected to SDS PAGE followed by western blot with 68342-1-Ig (RABL3 antibody) at dilution of 1:10000 incubated at room temperature for 1.5 hours. The membrane was stripped and reblotted with HRP-conjugated Beta Actin Monoclonal antibody (HRP-66009) as loading control.



Immunofluorescent analysis of (-20°C Methanol) fixed A549 cells using RABL3 antibody (68342-1-Ig, Clone: 2H3E1) at dilution of 1:800 and CoraLite® 488-Conjugated AffiniPure Goat Anti-Mouse IgG(H+L).