

For Research Use Only

CC2D1A Monoclonal antibody

Catalog Number: 68334-1-Ig

Featured Product



Basic Information

Catalog Number: 68334-1-Ig	GenBank Accession Number: BC064981	Purification Method: Protein G purification
Size: 150ul, Concentration: 1000 ug/ml by Nanodrop;	GeneID (NCBI): 54862	CloneNo.: 1C11G2
Source: Mouse	UNIPROT ID: Q6P1N0	Recommended Dilutions: WB: 1:5000-1:50000 IHC: 1:500-1:2000 IF/ICC: 1:500-1:2000
Isotype: IgG1	Full Name: coiled-coil and C2 domain containing 1A	
Immunogen Catalog Number: AG10363	Calculated MW: 951 aa, 104 kDa Observed MW: 130 kDa	

Applications

Tested Applications:
WB, IHC, IF/ICC, ELISA

Species Specificity:
human, mouse, rat

Note-IHC: suggested antigen retrieval with TE buffer pH 9.0; (*) Alternatively, antigen retrieval may be performed with citrate buffer pH 6.0

Positive Controls:

WB : U2OS cells, HEK-293 cells, LNCaP cells, HeLa cells, Jurkat cells, K-562 cells, HSC-T6 cells, NIH/3T3 cells, 4T1 cells

IHC : mouse testis tissue,

IF/ICC : HeLa cells,

Background Information

CC2D1A (coiled-coil and C2 domain-containing 1A), also known as Freud-1, Aki1 or TAPE (TBK1-associated protein in endolysosomes), is a evolutionary conserved protein located in different subcellular compartments, including the nucleus, centrosome, and endolysosomes. It acts as a scaffold protein that interacts with various proteins and plays diverse biological roles. Mutations in CC2D1A have been linked to nonsyndromic mental retardation (NMSR) and generate a truncated 85-kDa product. Several isoforms of CC2D1A proteins have also been described: 120 /130-kDa doublet of long isoform and 67 kDa short isoform. The short isoform of CC2D1A has been identified as the predominant isoform in rodent cells, while the long isoform is more abundant in human cells. Recently it has been reported that CC2D1A/TAPE is the first innate immune regulator implicated in both TLR and RLR signaling at a very early step.

Storage

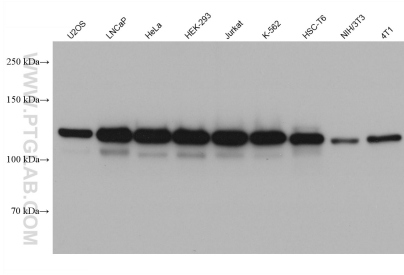
Storage:
Store at -20°C. Stable for one year after shipment.
Storage Buffer:
PBS with 0.02% sodium azide and 50% glycerol, pH7.3
Aliquoting is unnecessary for -20°C storage

*** 20ul sizes contain 0.1% BSA

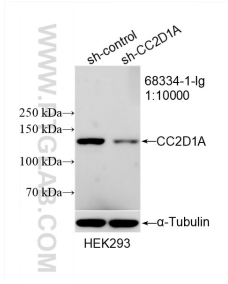
For technical support and original validation data for this product please contact:
T: 1 (888) 4PTGLAB (1-888-478-4522) (toll free in USA), or 1(312) 455-8498 (outside USA)
E: proteintech@ptglab.com
W: ptglab.com

This product is exclusively available under Proteintech Group brand and is not available to purchase from any other manufacturer.

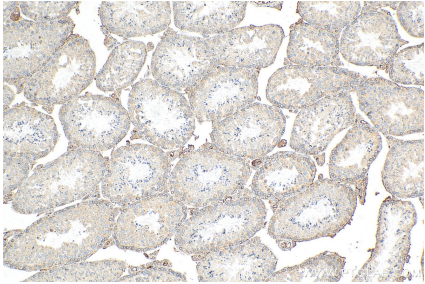
Selected Validation Data



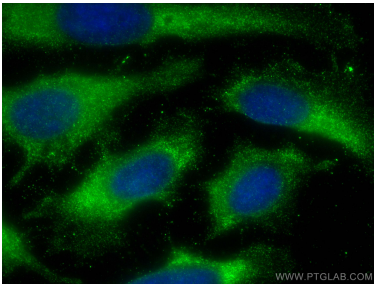
Various lysates were subjected to SDS PAGE followed by western blot with 68334-1-Ig (CC2D1A antibody) at dilution of 1:10000 incubated at room temperature for 1.5 hours.



WB result of CC2D1A antibody (68334-1-Ig; 1:10000; incubated at room temperature for 1.5 hours) with sh-Control and sh-CC2D1A transfected HEK-293 cells.



Immunohistochemical analysis of paraffin-embedded mouse testis tissue slide using 68334-1-Ig (CC2D1A antibody) at dilution of 1:1000 (under 10x lens). Heat mediated antigen retrieval with Tris-EDTA buffer (pH 9.0).



Immunofluorescent analysis of (-20°C Methanol) fixed HeLa cells using CC2D1A antibody (68334-1-Ig, Clone: 1C11G2) at dilution of 1:1000 and CoraLite®488-Conjugated AffiniPure Goat Anti-Mouse IgG(H+L).