

For Research Use Only

EPS8L2 Monoclonal antibody

Catalog Number: 68330-1-Ig **Featured Product**



Basic Information

| | | |
|----------------------------------------------------------------|----------------------------------------------|-----------------------------------------------------------------------|
| Catalog Number: 68330-1-Ig | GenBank Accession Number: BC002474 | Purification Method: Protein A purification |
| Size: 150ul , Concentration: 1000 µg/ml by Nanodrop; | GeneID (NCBI): 64787 | CloneNo.: 2E3B1 |
| Source: Mouse | Full Name: EPS8-like 2 | Recommended Dilutions: WB 1:5000-1:50000 IF 1:250-1:1000 |
| Isotype: IgG1 | Calculated MW: 715 aa, 81 kDa | |
| Immunogen Catalog Number: AG16808 | Observed MW: 81-85 kDa | |

Applications

| | |
|--------------------------------------------------|------------------------------------------------------------------------------------------------------------------------|
| Tested Applications: IF, WB, ELISA | Positive Controls: |
| Species Specificity: Human, Mouse, Rat | WB : rat skin tissue, A431 cells, HepG2 cells, A549 cells LNCaP cells HeLa cells HepG2 cells, mouse skin tissue |
| | IF : HeLa cells, |

Background Information

EPS8L2 (epidermal growth factor receptor pathway substrate 8 L2), a member of the Eps8-like protein family, is a newly identified hair bundle protein that is localized at the tips of stereocilia of both cochlear and vestibular hair cells.

Storage

Storage:
Store at -20°C. Stable for one year after shipment.
Storage Buffer:
PBS with 0.02% sodium azide and 50% glycerol pH 7.3.
Aliquoting is unnecessary for -20°C storage

*** 20ul sizes contain 0.1% BSA

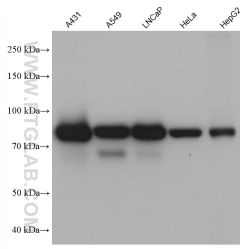
For technical support and original validation data for this product please contact:

T: 1 (888) 4PTGLAB (1-888-478-4522) (toll free in USA), or 1(312) 455-8498 (outside USA)

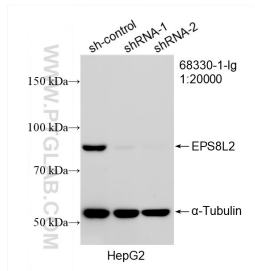
E: proteintech@ptglab.com
W: ptglab.com

This product is exclusively available under Proteintech Group brand and is not available to purchase from any other manufacturer.

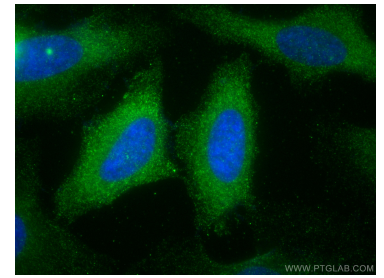
Selected Validation Data



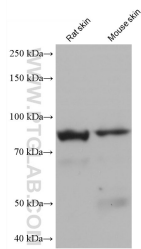
A431 cells were subjected to SDS PAGE followed by western blot with 68330-1-Ig (EPS8L2 antibody) at dilution of 1:10000 incubated at room temperature for 1.5 hours.



WB result of EPS8L2 antibody (68330-1-Ig; 1:20000; incubated at room temperature for 1.5 hours) with sh-Control and sh-EPS8L2 transfected HepG2 cells.



Immunofluorescent analysis of (-20°C Methanol) fixed HeLa cells using EPS8L2 antibody (68330-1-Ig, Clone: 2E3B1) at dilution of 1:500 and CoraLite@488-Conjugated AffiniPure Goat Anti-Mouse IgG(H+L).



rat skin tissue were subjected to SDS PAGE followed by western blot with 68330-1-Ig (EPS8L2 antibody) at dilution of 1:10000 incubated at room temperature for 1.5 hours.